



- *ISS45 Office Installation Guide,*
- *Microsoft® SQL® Express 2008 Release 2*
- *Version 8.1.8.1-050*
- 
- 



## ISS45 Microsoft SQL Express 2008 Release 2 Installation Guide

Date of Issue	Product ID Num.	Part Number	Brief Description
March 2015	45001/032	89000824	8.1.7.0-150 Release
April 2015	45001/032	89000829	8.1.7.0-150 Release – Updated
June 2015	45001/032	89000844	8.1.8.0-150 Release
September 2016	45001/032	89000880	8.1.8.1-050 Release

**©Copyright NCR Corporation 1995-2016  
All rights reserved**

This publication is protected by federal copyright law. This document and its contents are the proprietary, confidential information and property of NCR Corporation ("NCR"). Unauthorized disclosure, reproduction, distribution or use of this document and/or its contents in any form is strictly prohibited. No part of this publication may be reproduced or transmitted into any human or computer language in any form or by any means, stored in a retrieval system, transmitted, redistributed, translated or disclosed to third parties, or de-compiled in any way including, but not limited to, photocopy, photograph, electronic, mechanical, magnetic or manual without the express written permission of NCR or its licensors, if any. This document, notwithstanding the above, may be distributed in electronic or printed form by NCR to personnel who are employed by either (a) a licensee and end user of the subject system of this document or (b) personnel from an authorized NCR Channel Partner or Solution Provider of the subject system of this document. All copies of this document so distributed and/or so authorized, shall contain a full copy of this copyright notice.

NCR has prepared this document as a guide to the proper installation, operation, customization and/or maintenance of NCR products. The drawings and specifications contained herein are the property of NCR and/or its licensors.

NCR endeavors to ensure that the information in this document is correct and fairly stated but does not accept liability for any error or omission. NCR makes no representation or warranties with respect to the contents hereof, and specifically disclaims any implied warranties of merchantability or fitness for a particular purpose or non-infringement. No commitments by NCR or its suppliers are made by or from this documentation which is provided for information only.

Development of NCR products and documentation is continuous: NCR reserves the right to revise this publication and to make changes at any time to the contents hereof or to the products herein described or discussed without notice and without any obligation for NCR to notify any person or organization of such revision or changes. Information published in this document will likely be superseded, and it is recommended that users regularly check for updates and newer versions.

The trademarks NCR, Retailix, StoreNext, ISS45, ScanMaster, R10, ACS, PocketOffice, RPO, RBO, ABO, Connected Payments, ServerEPS, Connected Services, Connected Loyalty, WinEPS and all other NCR product names are registered trademarks or trademarks of NCR; all other trademarks or registered trademarks are the property of their respective owners. Third-party products, services, or company names referenced in this document may be trademarked or copyrighted by their respective owners, and are for identification purposes only. Copyrights, trademarks and license agreements shall be governed and construed in accordance with the laws of the State of New York and the Federal Arbitration Act, and shall benefit NCR, its successors, and assigns.

Address comments and corrections regarding this document to:

Attn: Software Program Director  
NCR  
797 Commonwealth Drive  
Warrendale, PA 15086

# Table of Contents

Table of Contents.....	i
Overview.....	1
Microsoft® SQL Server® 2008 Express Installation .....	2
Backwards Compatibility (SQLDMO) SQLServer2005_BC.msi.....	28
Enable Named Pipes.....	36
Disable Data Execution Prevention (DEP) .....	38



# Overview

This document will guide you through the installation of:

- SQL Server 2008 Express R2 with Tools
- SQLDMO pack install.
- Enabling Named Pipes
- Disabling Data Execution Prevention (DEP)

The recommended hardware requirements for SQL 2008 Express R2 (32-bit) with Retailix are:

- CPU = P4 - 2.0 GHz or higher
- RAM = 4 GB or higher
- HD = 80 GB or higher

Software requirements for MFS1 are:

- Windows 7 Professional
- Windows Server 2008

**Note: Windows Server 2000 is no longer supported by SQL Server 2008.**

Prerequisites (\* = Installed by installation wizard if they do not exist)

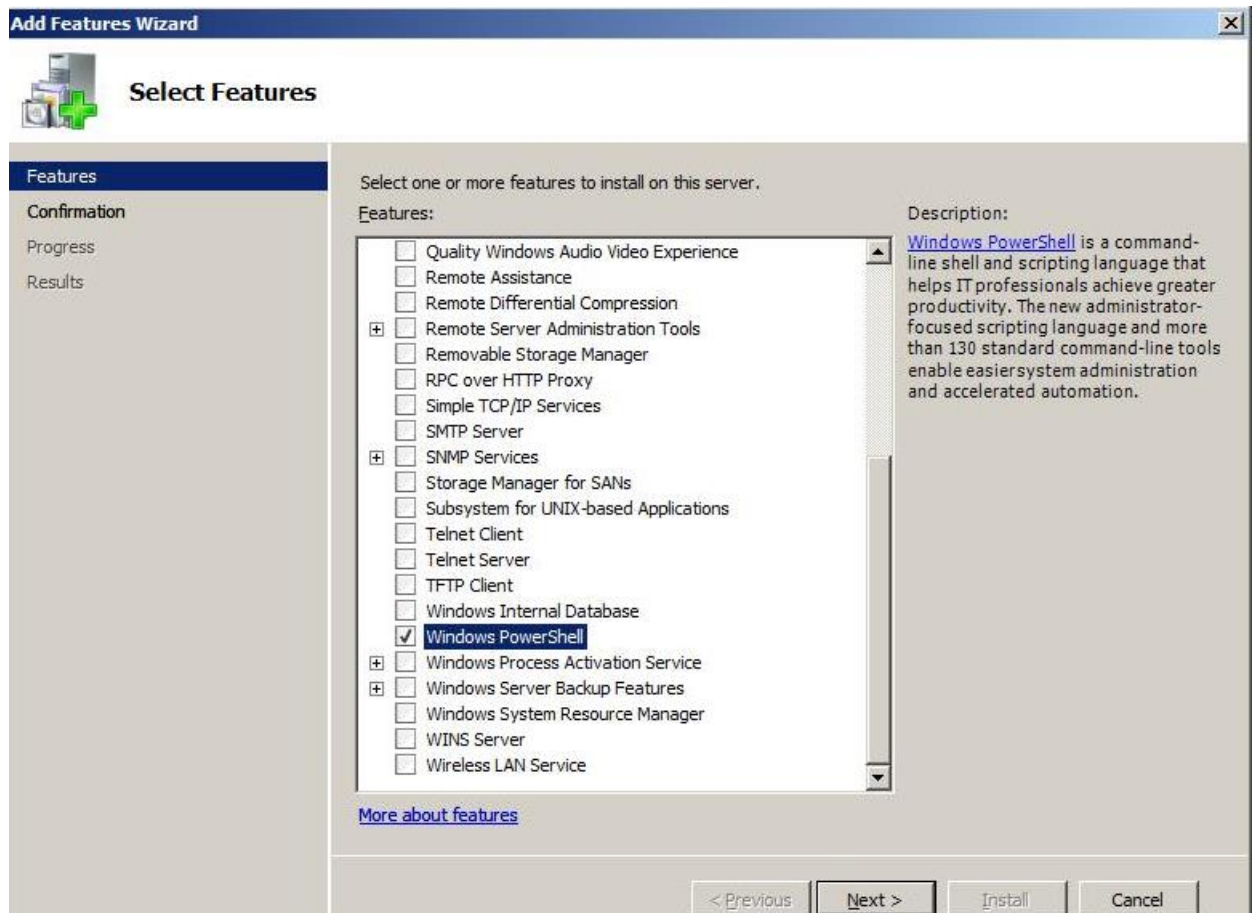
- .Net Framework 3.5sp1
- SQL Server Native Client\*
- SQL Server Setup Support Files\*
- Internet Explorer 7
- SQLDMO Pack (backward compatibility)

**Note: You must be logged into Windows as the Administrator User when installing any Retailix related applications on MFS1, MFS2, an LFS Workstation or POS Terminal.**

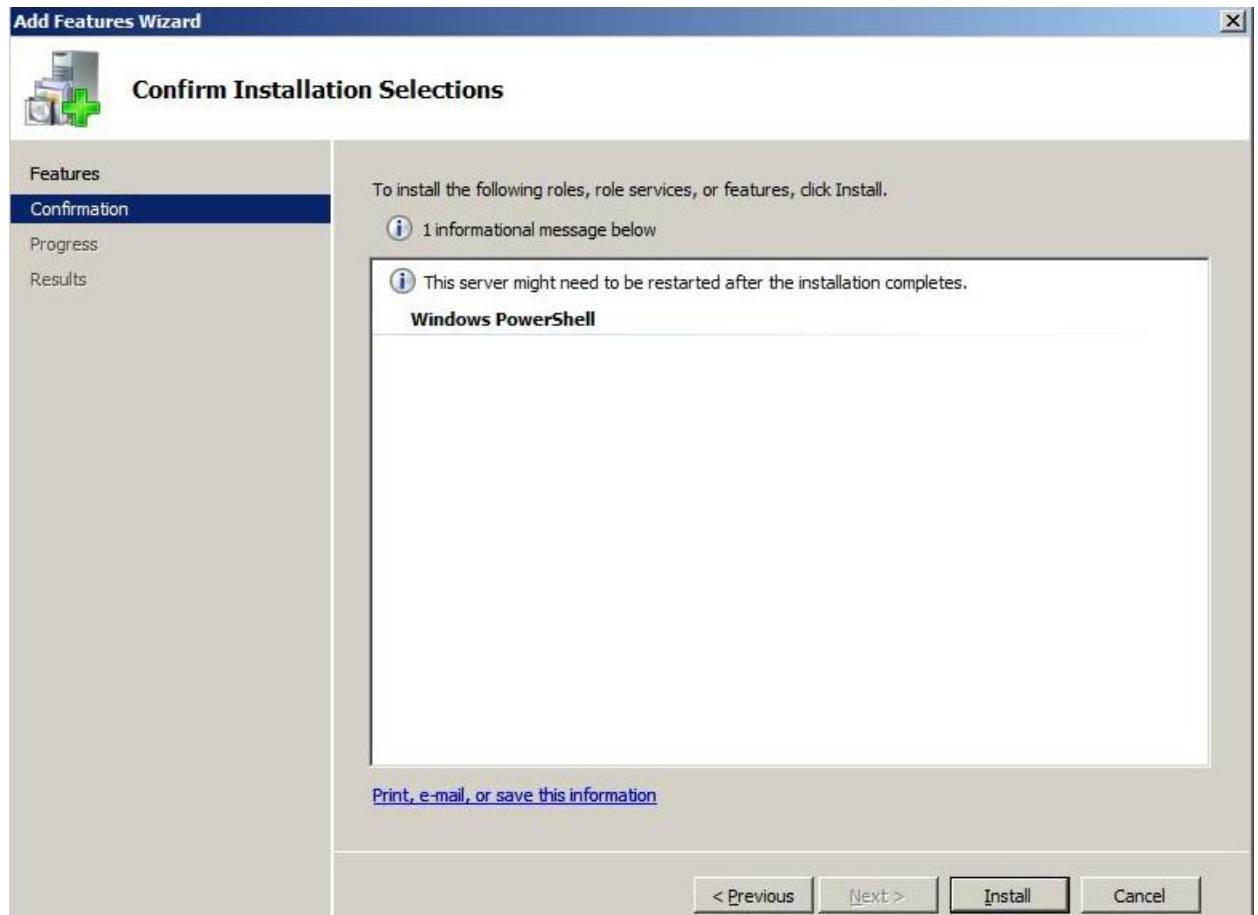
# Microsoft® SQL Server® 2008 Express Installation

1. The POWERSHELL feature needs to be installed if Server 2008:  
(Not necessary on Windows 7 system)

Go to Start\Server Manager\Add Features and select Windows Powershell.



When complete:

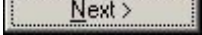


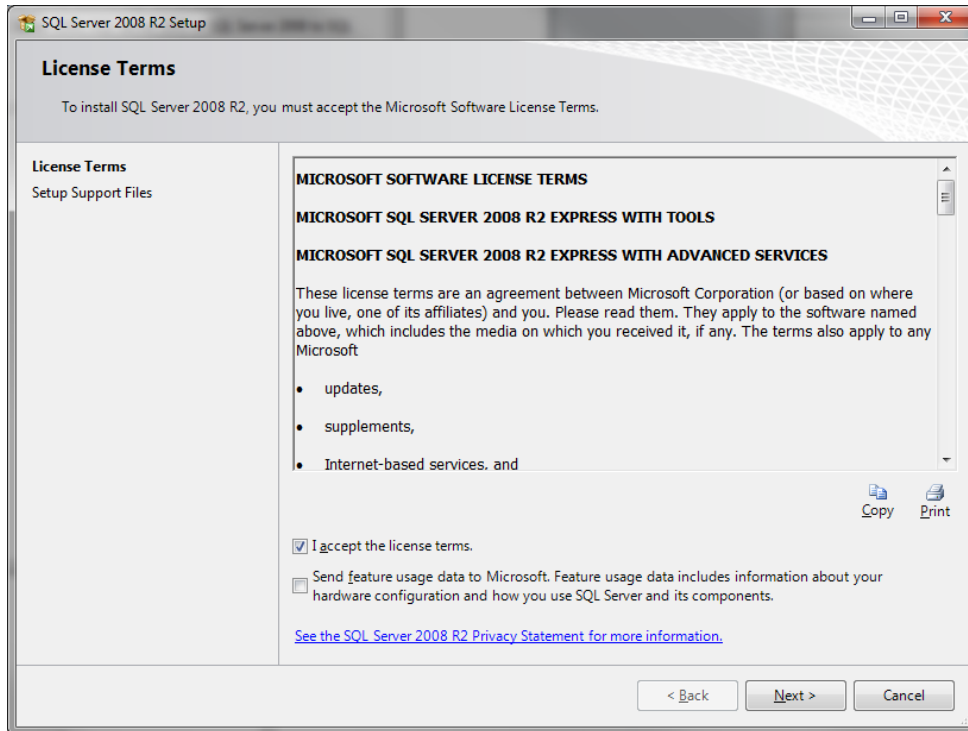
2. From the CD or from the folder containing the SQL source files, right click `en_sql_server_2008_r2_express_edition_with_tools_with_service_pack_1_x86_713477.exe` and run as administrator. SQL Server Installation Center is displayed.

3. If Microsoft .net 3.5 SP1 and Microsoft Windows Installer 4.5 are not installed, you will get the following message:

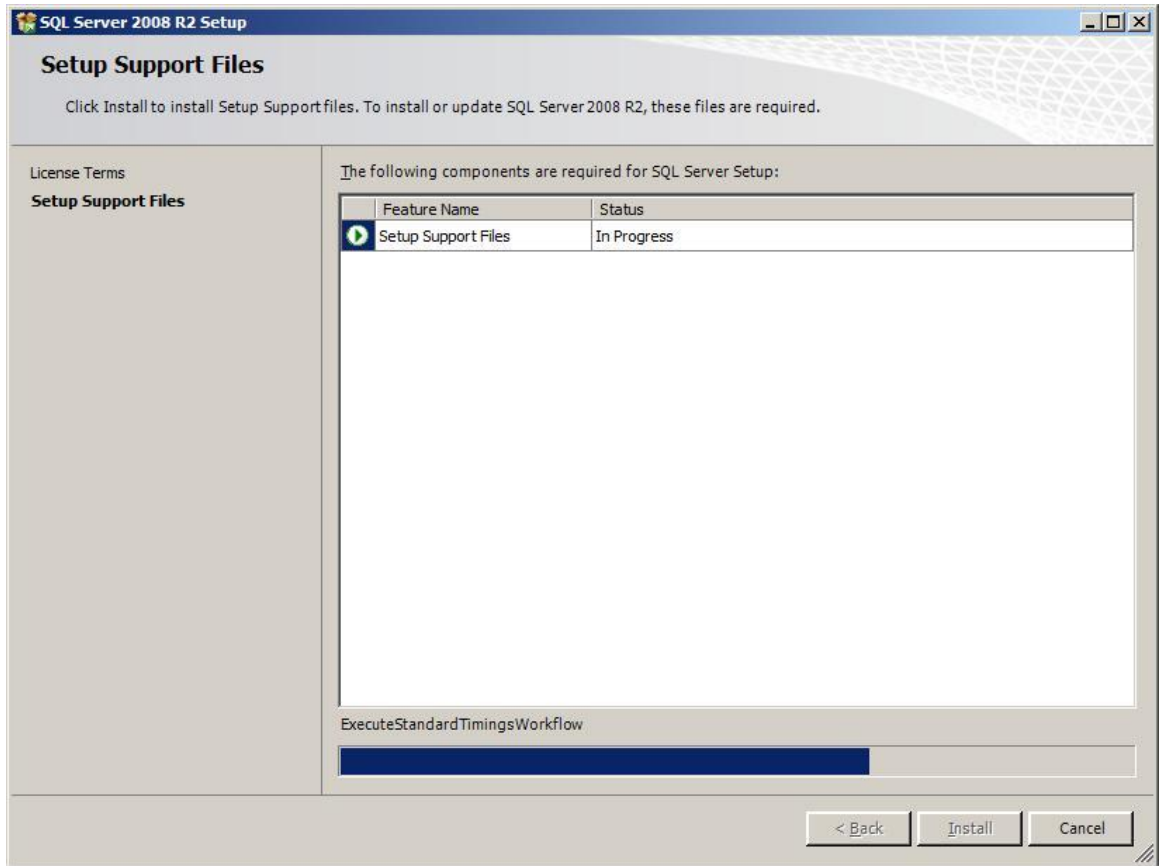


4. Click on each to install and reboot. Then restart the installation.
5. Click New Installation. The License Terms screen is displayed.
6. Approve the license agreement by checking  I accept the license terms.

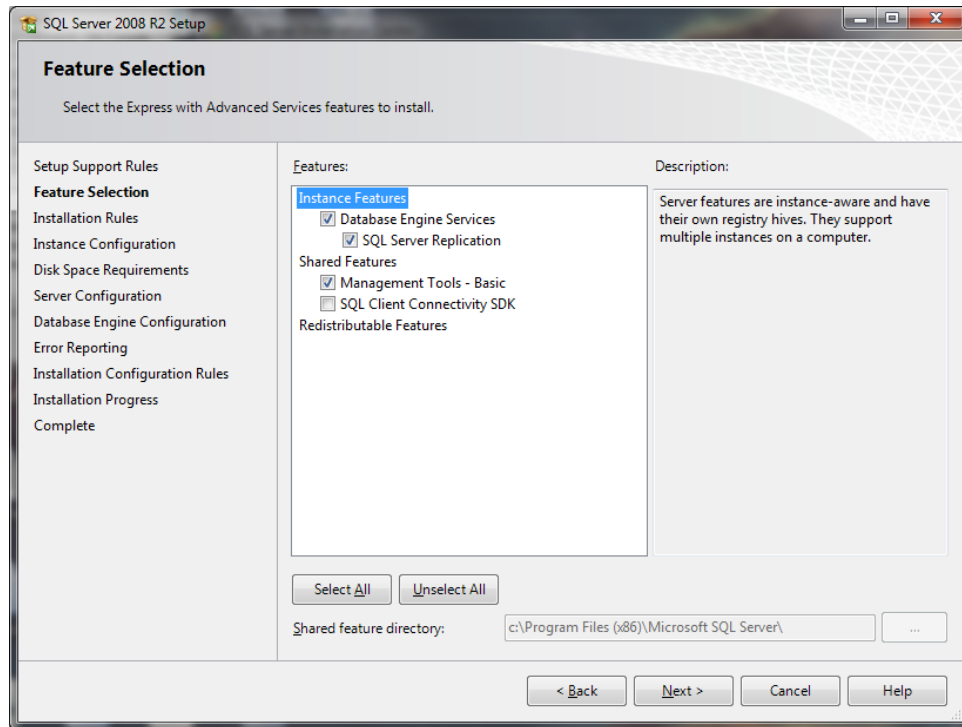
7. Click . The **SQL Server 2008 RS Setup** screen displays.



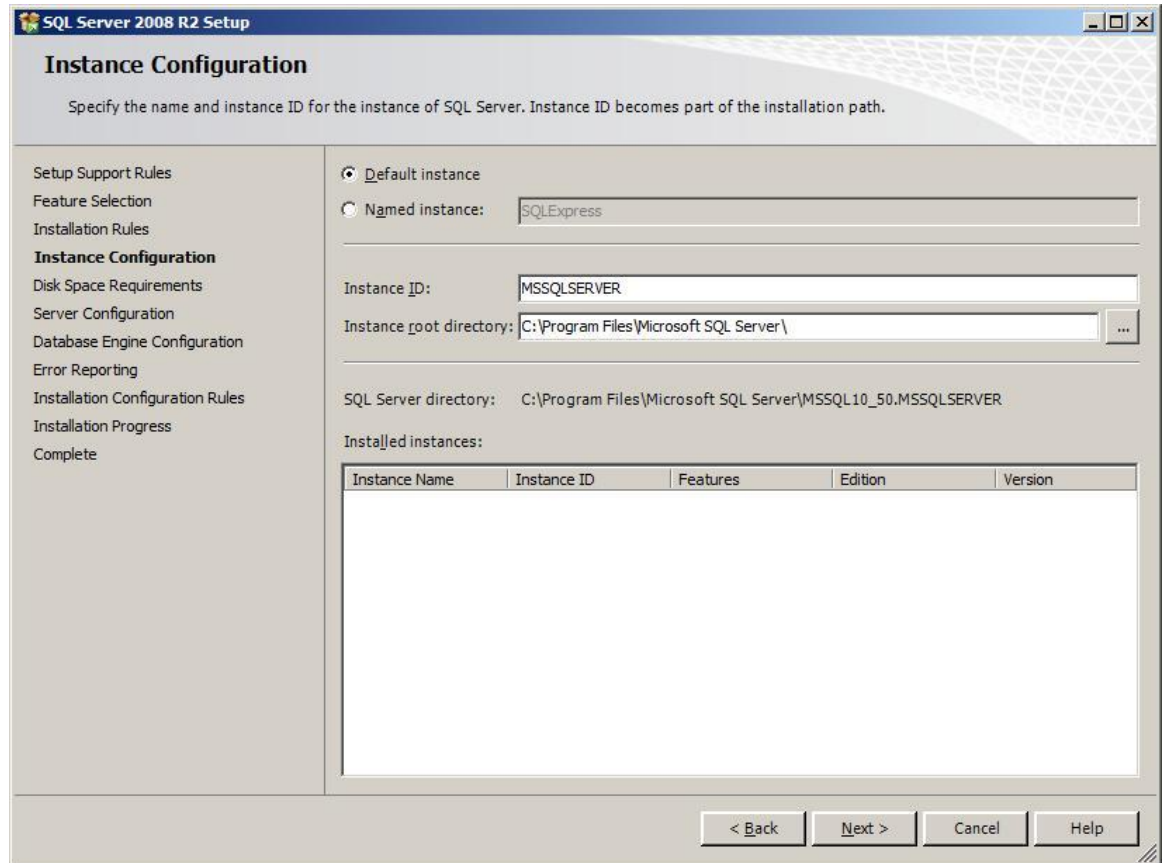
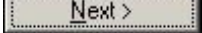
Installation will automatically begin.



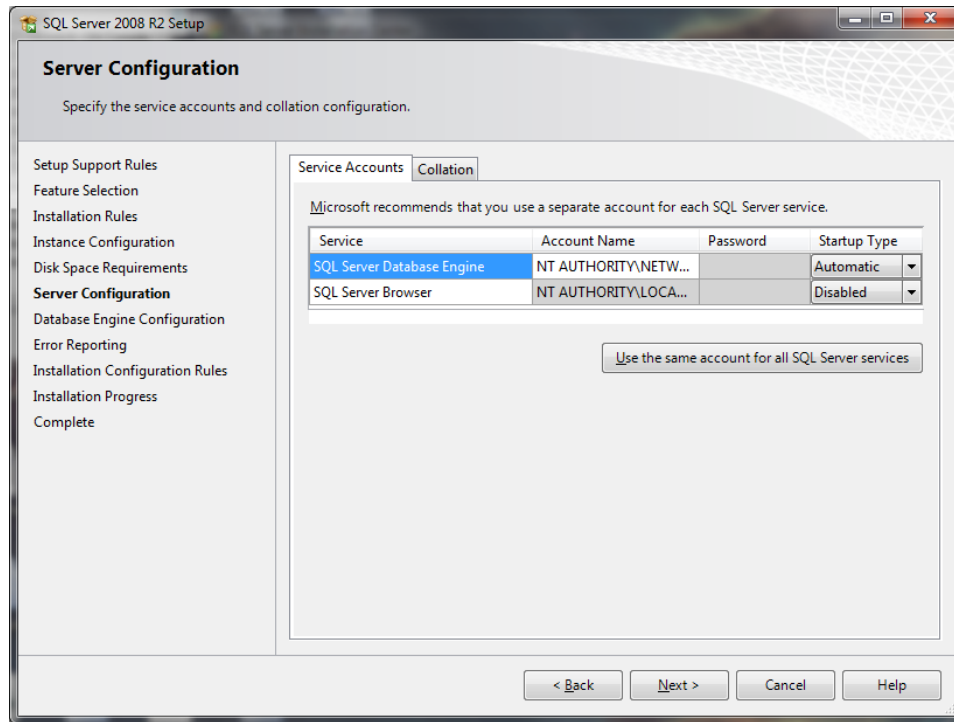
8. Select Database Engine Services, SQL Server Replication and Management Tools – Basic. Uncheck SQL Client Connectivity SDK



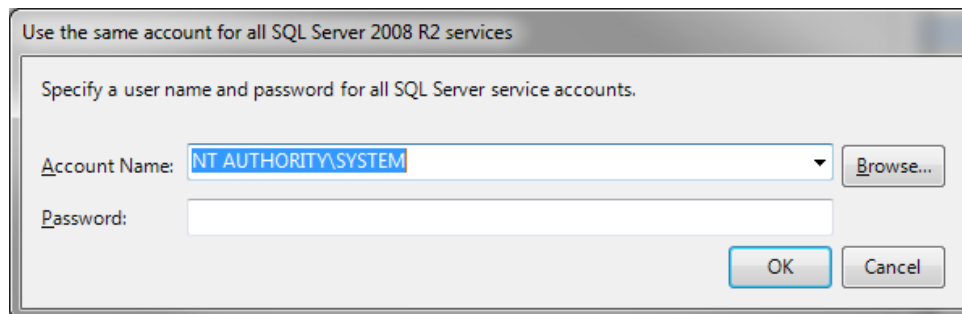
9. Click .

10. Choose **Default Instance**.11. Click .

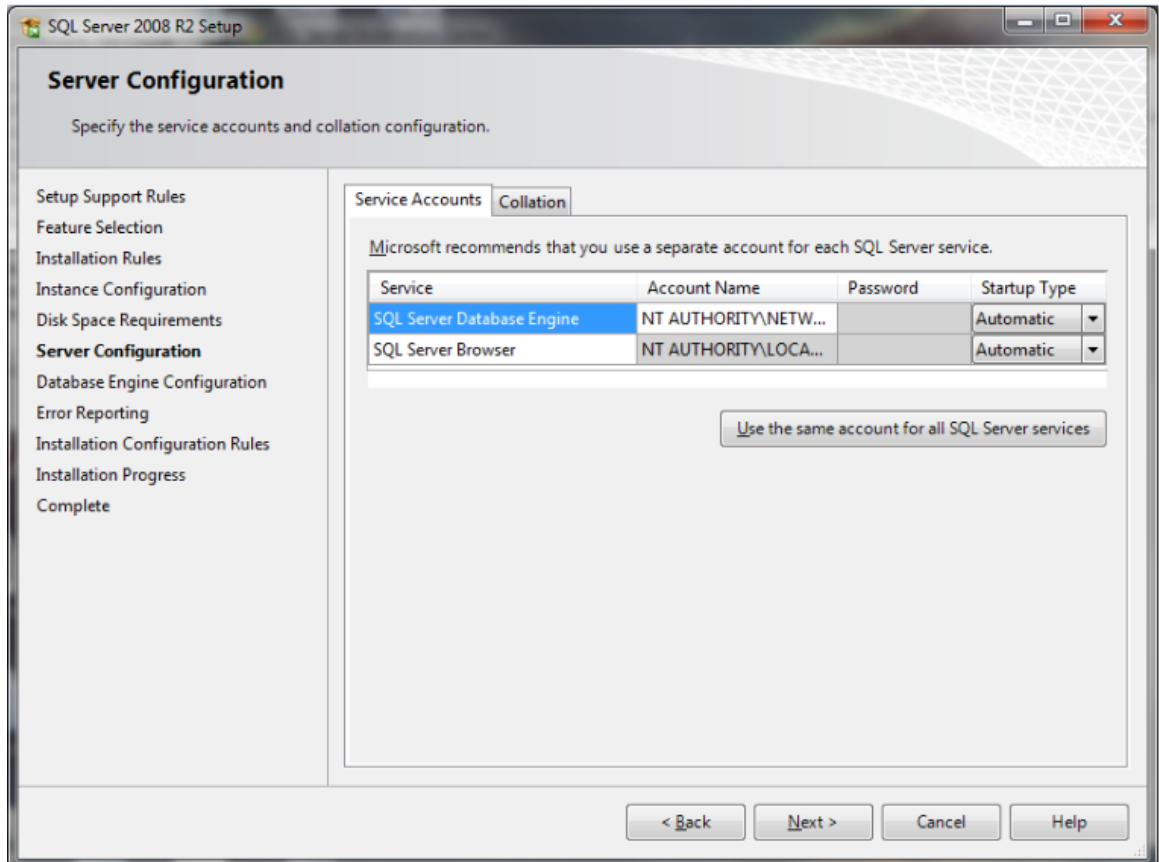
12. Click Use the same account for all SQL Server services.



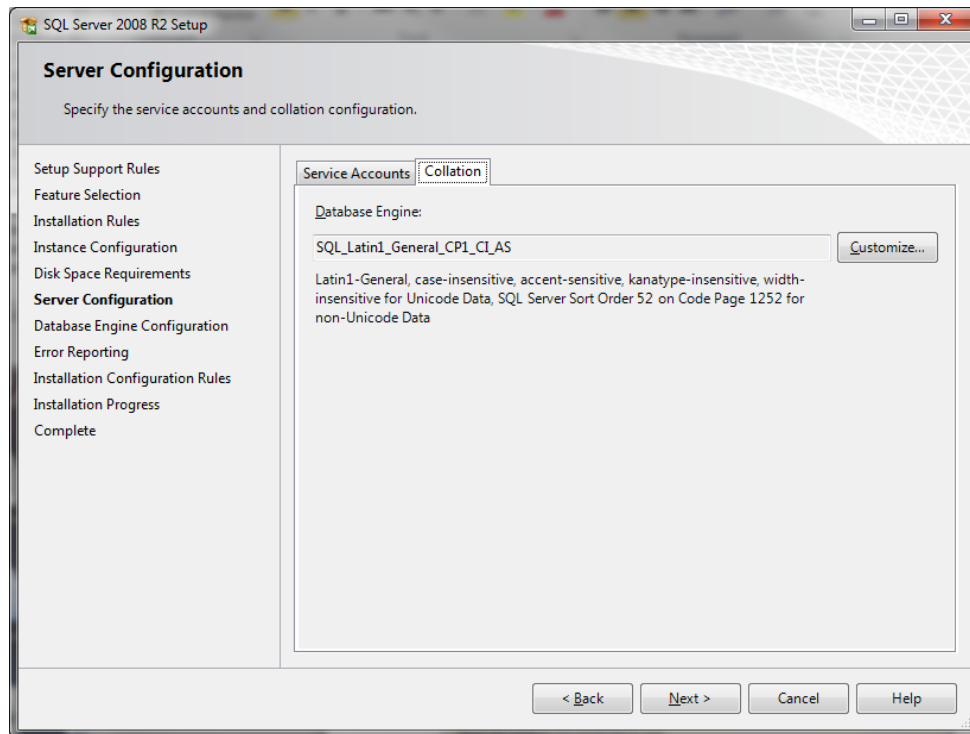
13. Click the Account Name field drop-down button and select NT AUTHORITY\SYSTEM. Leave the password blank. Press OK.



14. For the SQL Server Browser Service, choose Automatic from the Startup Type field drop-down button. **DO NOT SELECT NEXT!!!!**

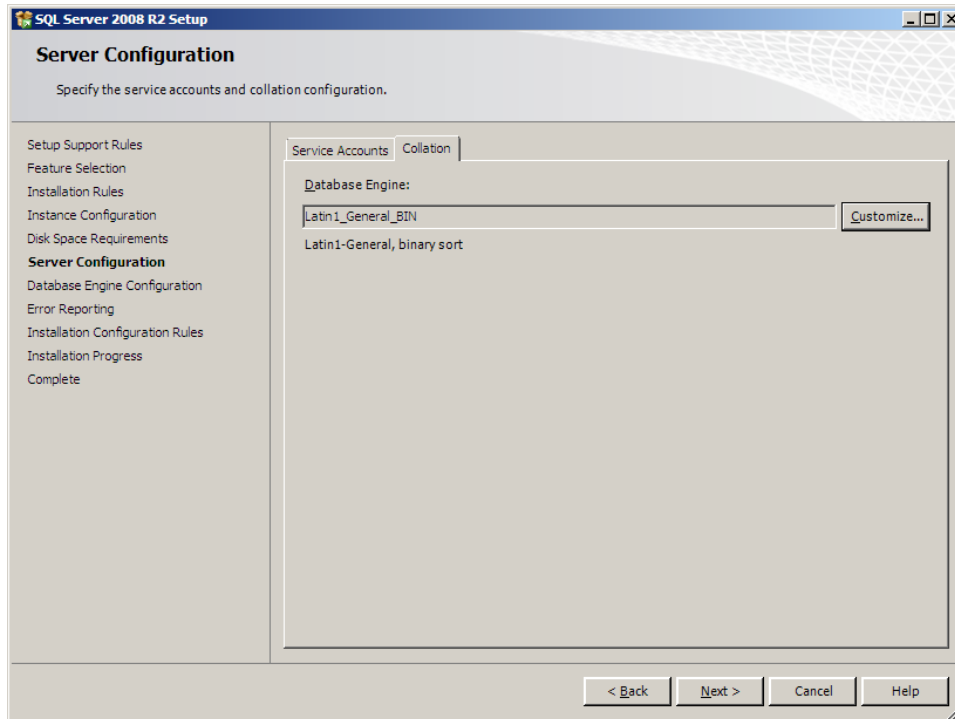


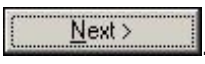
15. Click the Collation tab.
16. Click Customize.



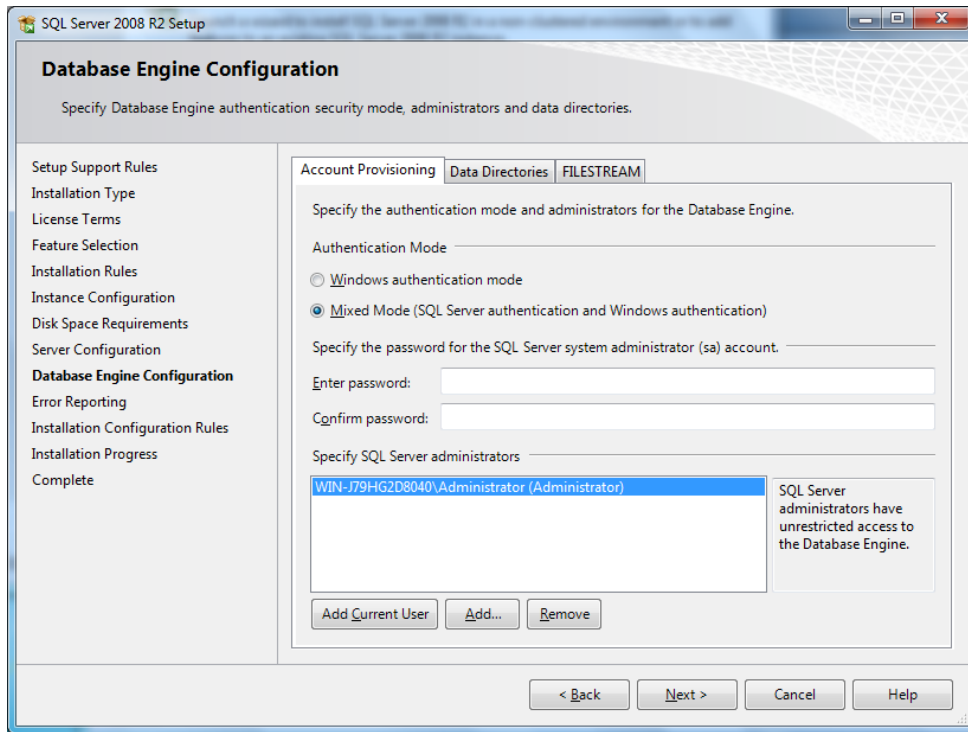
17. Select Windows collation designator and sort order.
18. Choose Latin1\_General from the Collation designator field using the drop-down selection button.
19. Check Binary.

20. Click **OK**. (The selections should display as shown below).

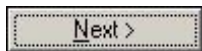


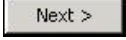
21. Click .

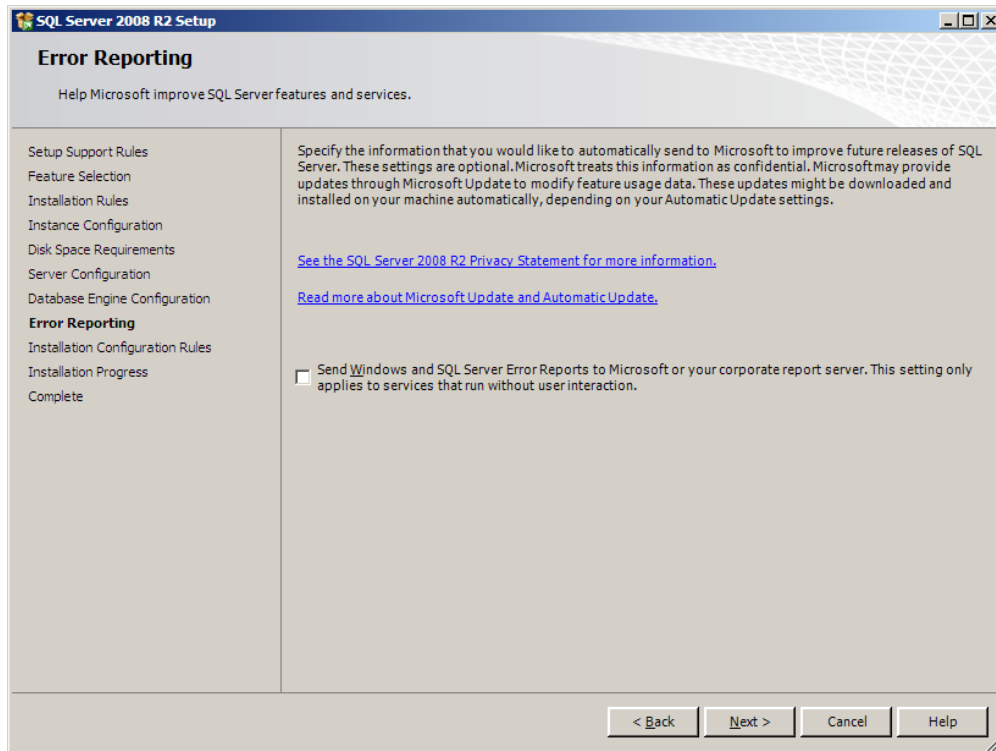
22. Select **Mixed Mode** radio button, enter (and confirm) a password.



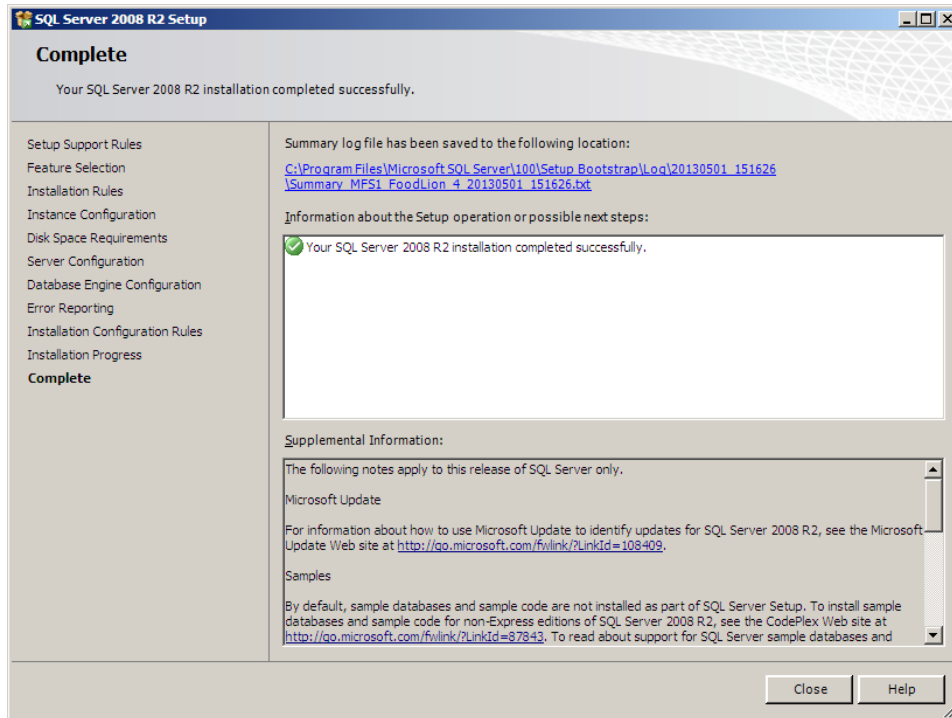
23. Click



24. Click . The installation will begin. (Depending on the system, this may take a few minutes.) When finished, the Complete screen displays:

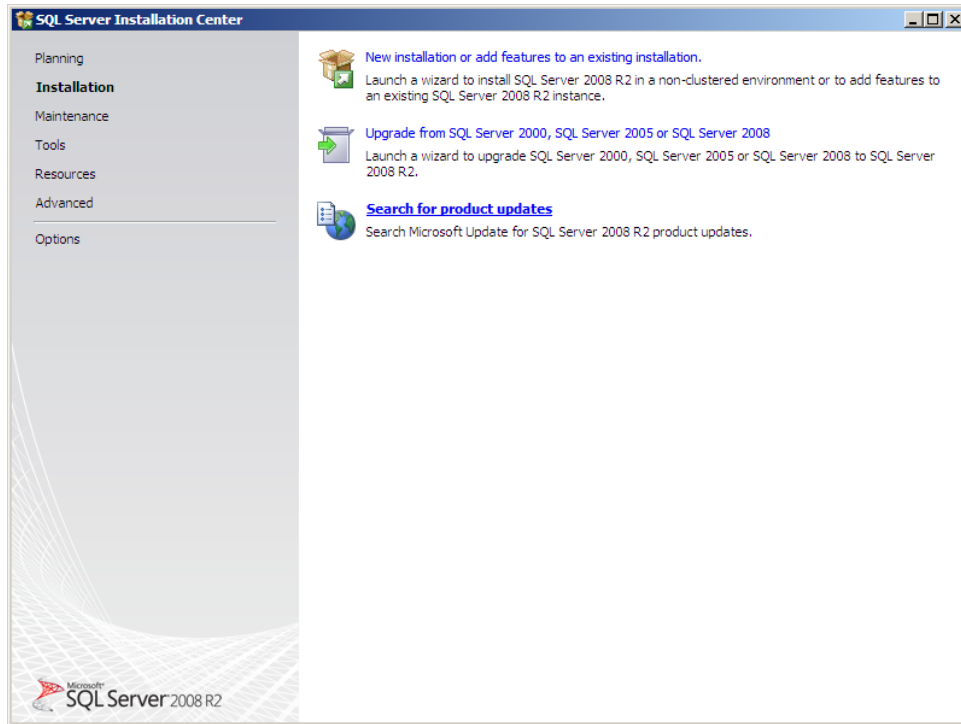


25. Click the link to view the installation log to verify the installation.

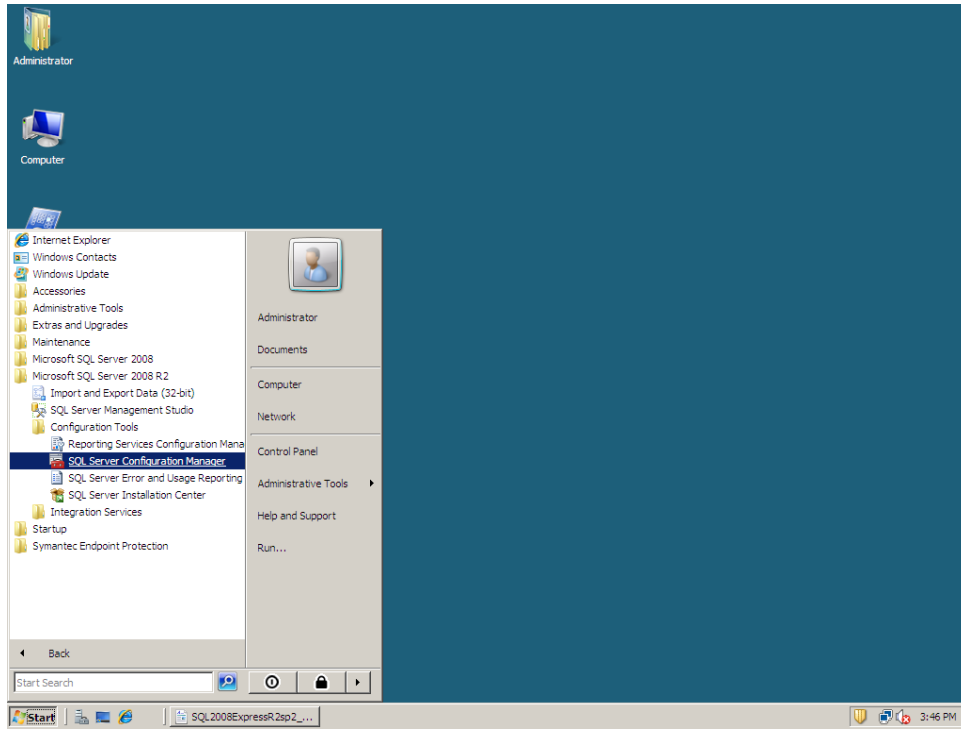


26. Click Close.

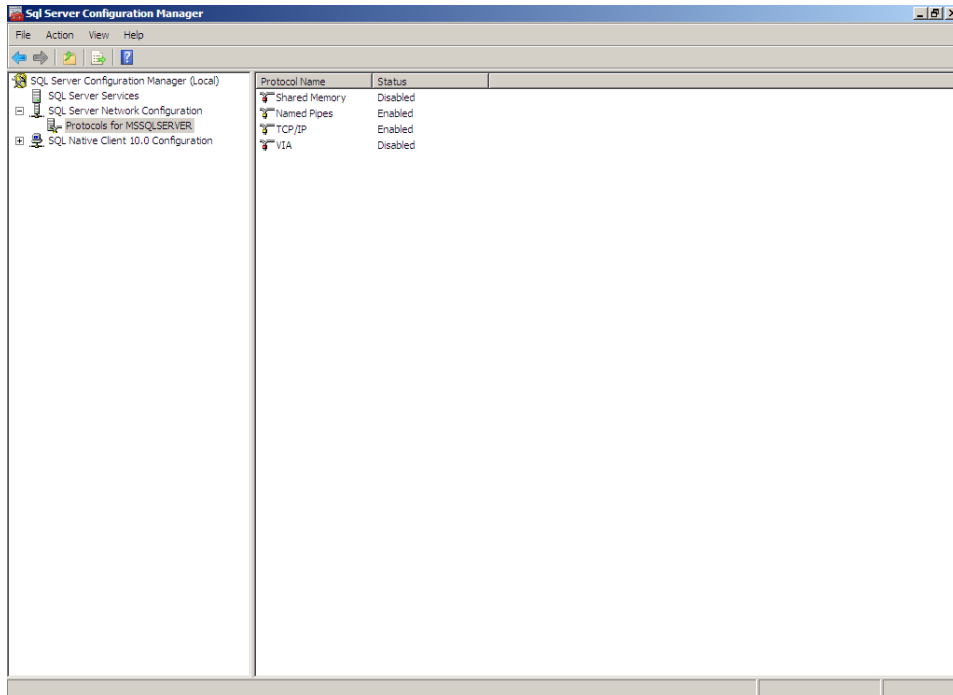
27. If able Search for product updates. (If not, close).



28. Open the SQL Server Configuration Manager.



29. Click "+" to expand SQL Server Network Configuration.

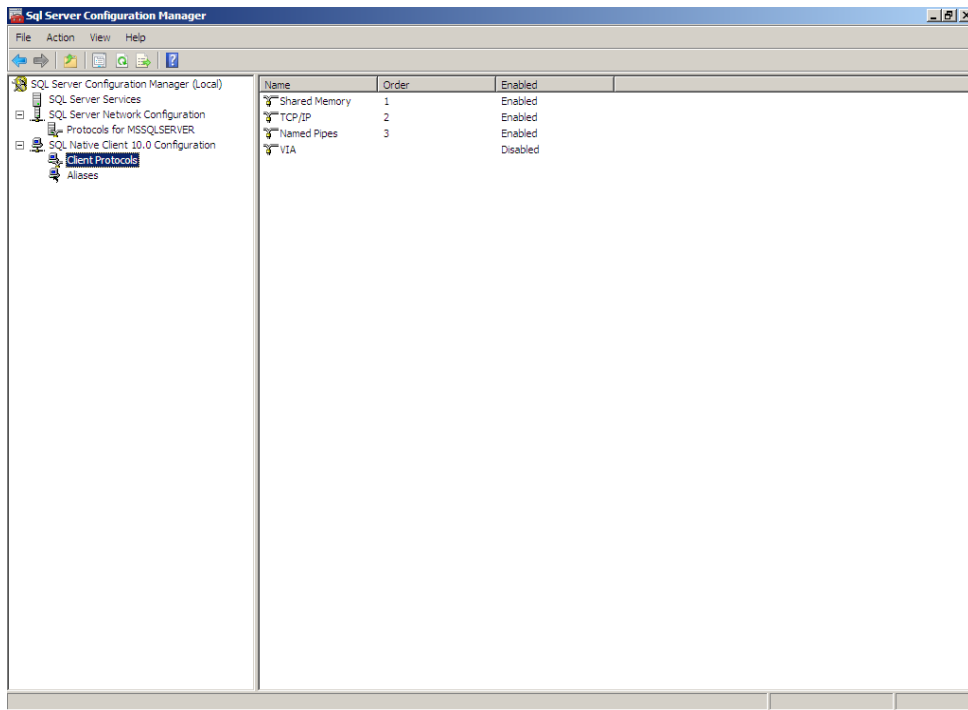


30. Select Protocols for MSSQLSERVER.

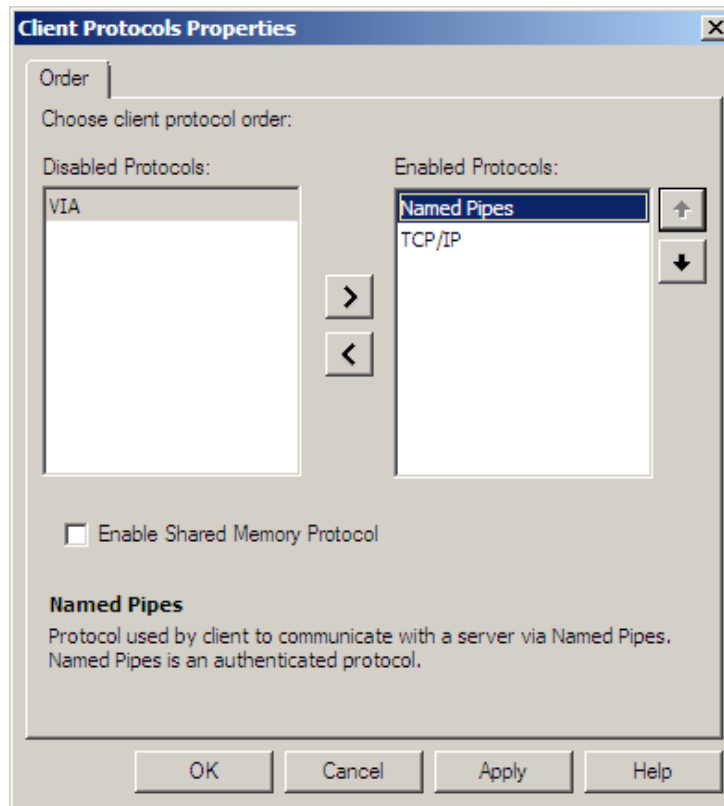
31. Named Pipes and TCP/IP should be enabled by right-clicking each one and choosing "Enable".

32. Right-click Shared Memory and choose "Disable".

33. Click the "+" to expand SQL Native Client 10.0 Configuration.
34. Select Client Protocols.

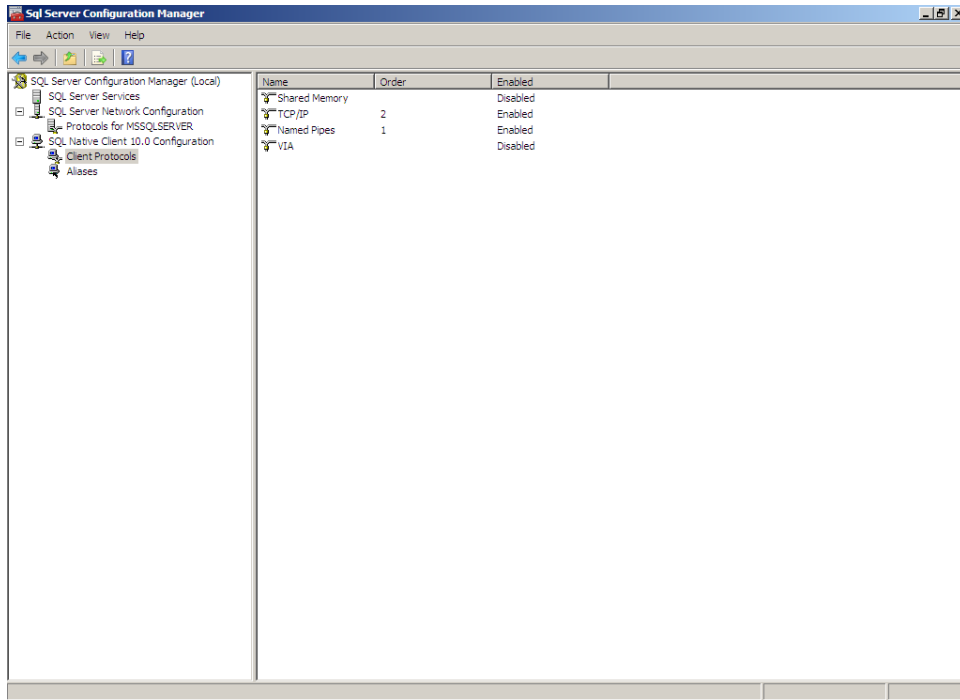


35. Right-click Shared Memory and select "Order".
36. Under Enabled Protocols select "Named Pipes" and click the up-arrow to move it to the top of the list.



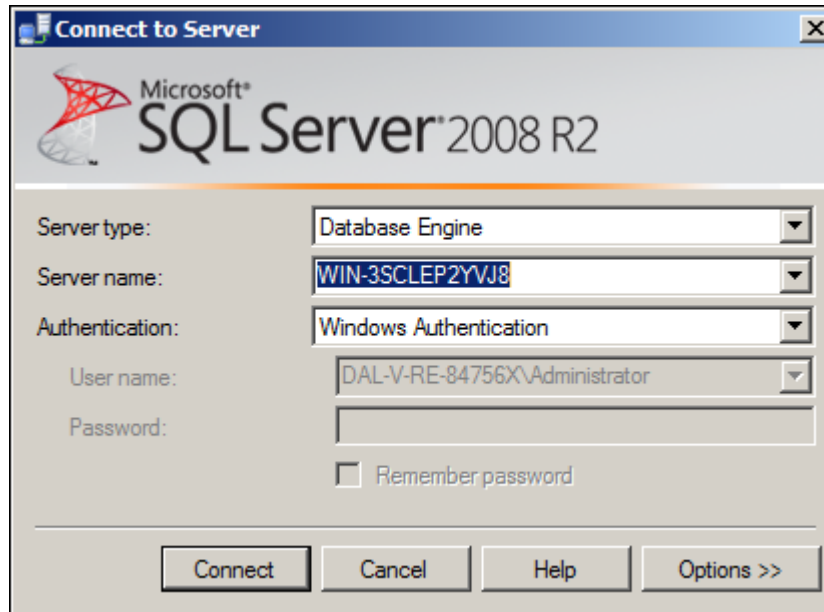
37. Click OK.

38. Again, disable Shared Memory by right-clicking and selecting “Disable”.

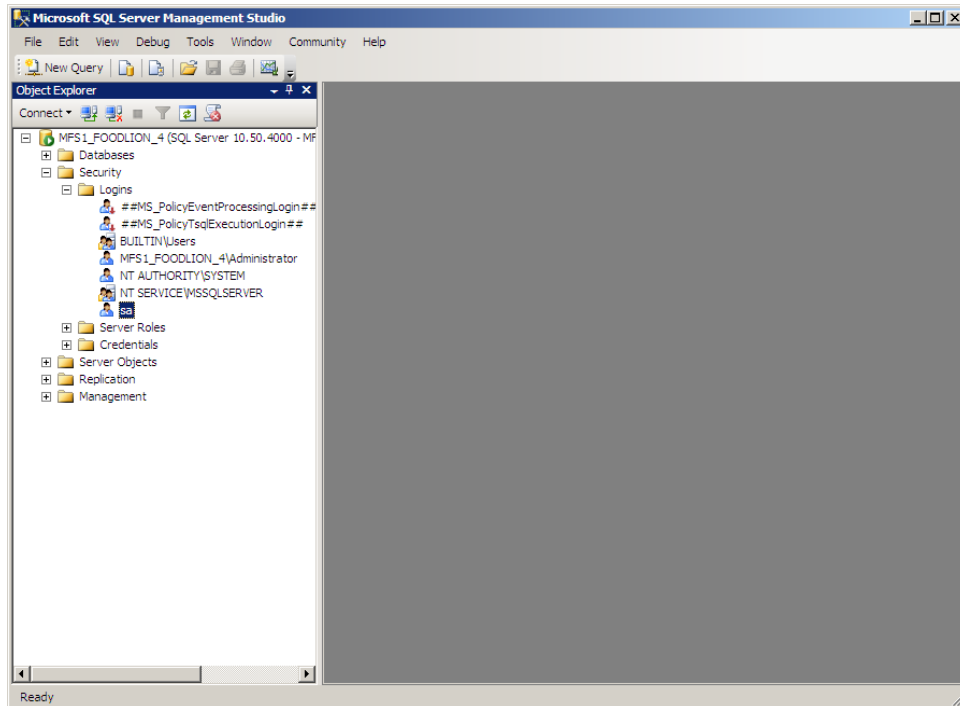


39. Close SQL Server Configuration Manager.

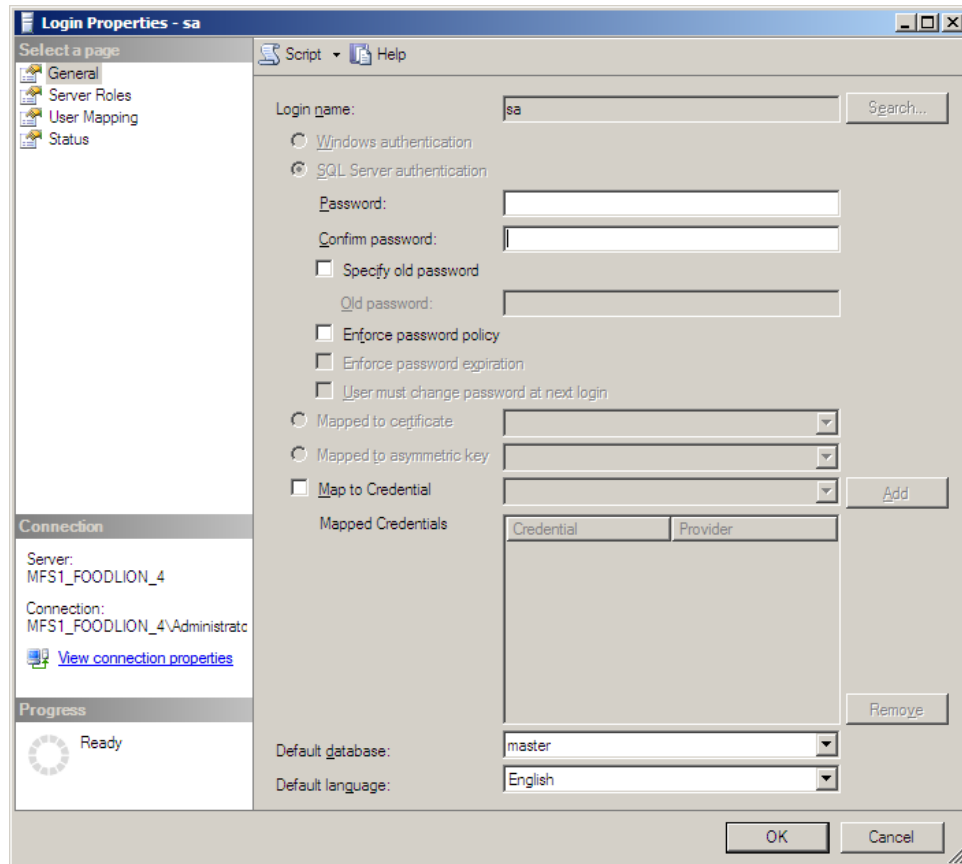
40. Launch the SQL Server Management Studio.
41. It should default to your server. If not, select it then press “Connect”.



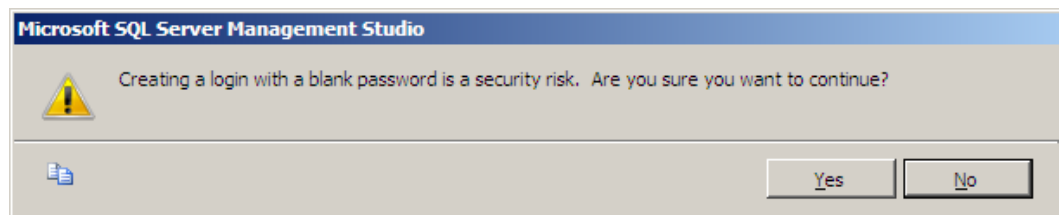
42. “+” Expand the server.
43. “+” Expand Security.
44. “+” Expand Logins.
45. Right-click “sa” and choose “Properties”.



46. Delete the “Password” and “Confirm Password” fields.
47. Uncheck “Enforce password policy”.



48. Click OK. A confirmation will display.
49. Click Yes.



50. Disconnect from the server.
51. Close SQL Management Studio. At this point, a few settings need to be adjusted to ensure the server can communicate with the network

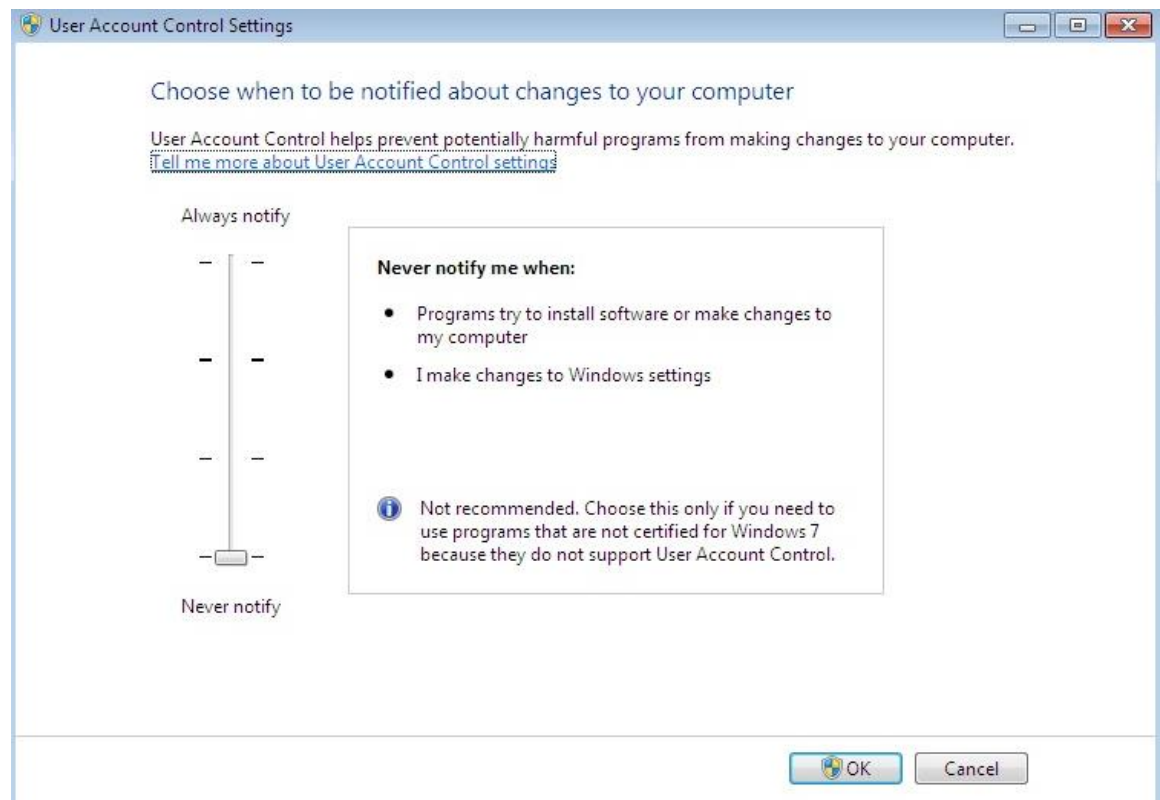
52. User Account Control (UAC) should be turned off (under Control Panel -> User Accounts).

On Windows 2008:

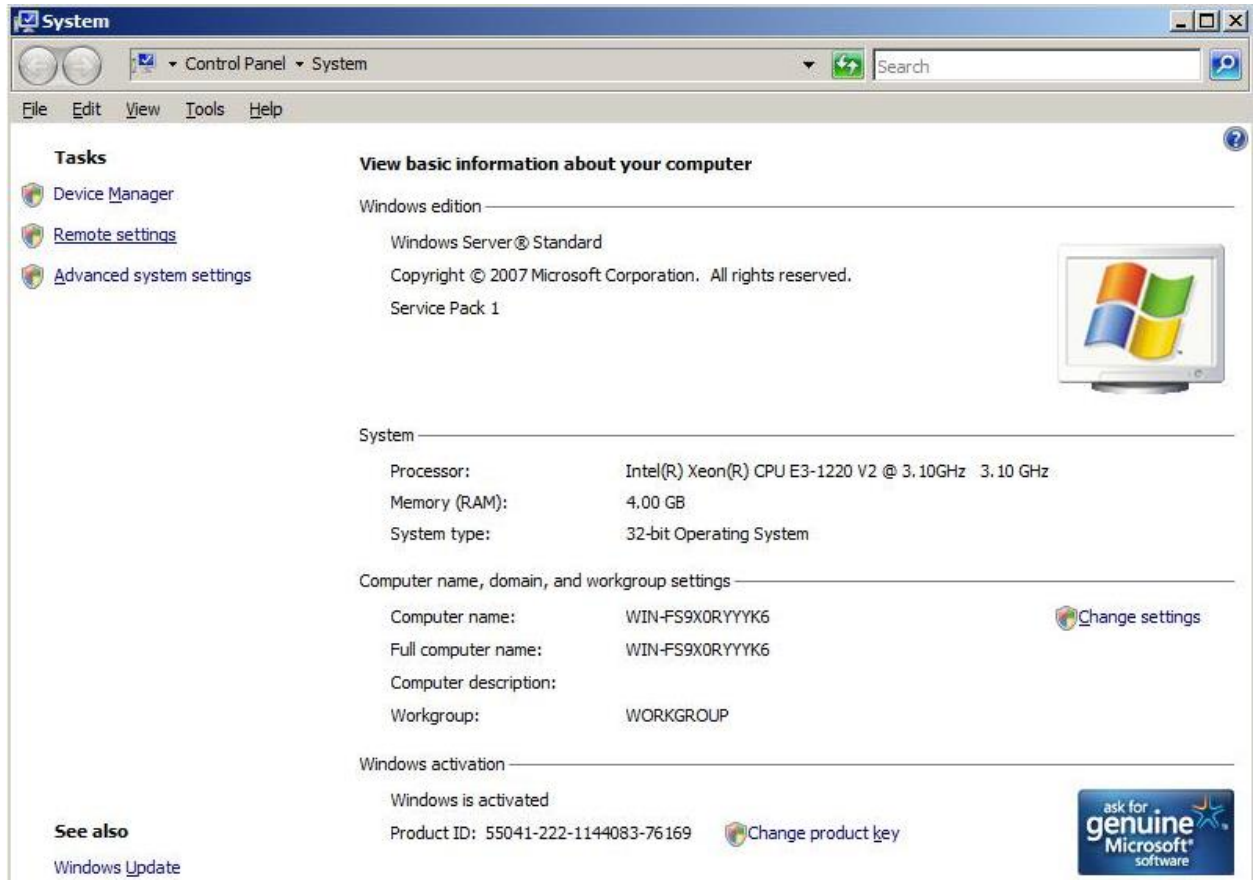


User Account Control (UAC) should be turned Never (under Control Panel -> User Accounts).

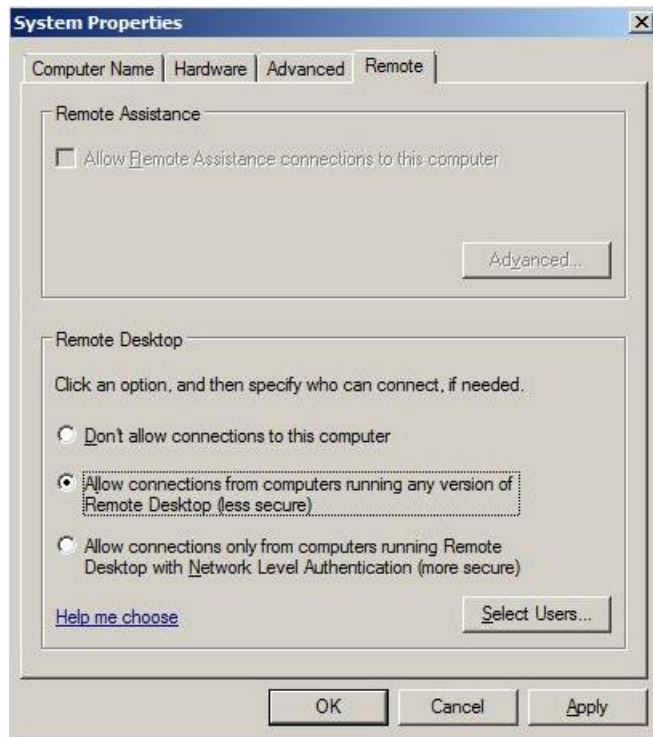
On Windows 7:



53. Remote Connection settings should be set to “allow all connections” (under Control Panel -> System -> Remote Settings).



54. Select Allow connection from computers running any version of Remote Desktop (less secure).



55. Disable Windows Firewall.  
56. Reboot the server to apply the server configuration changes.  
57. Backward compatibility software must be installed. (Note: Ensure the correct software is installed, i.e. 32 or 64-bit). See pages 28-34  
58. Disable Data Execution Prevention. See pages 35-40  
59. The system is now ready for the ISS45 installation.

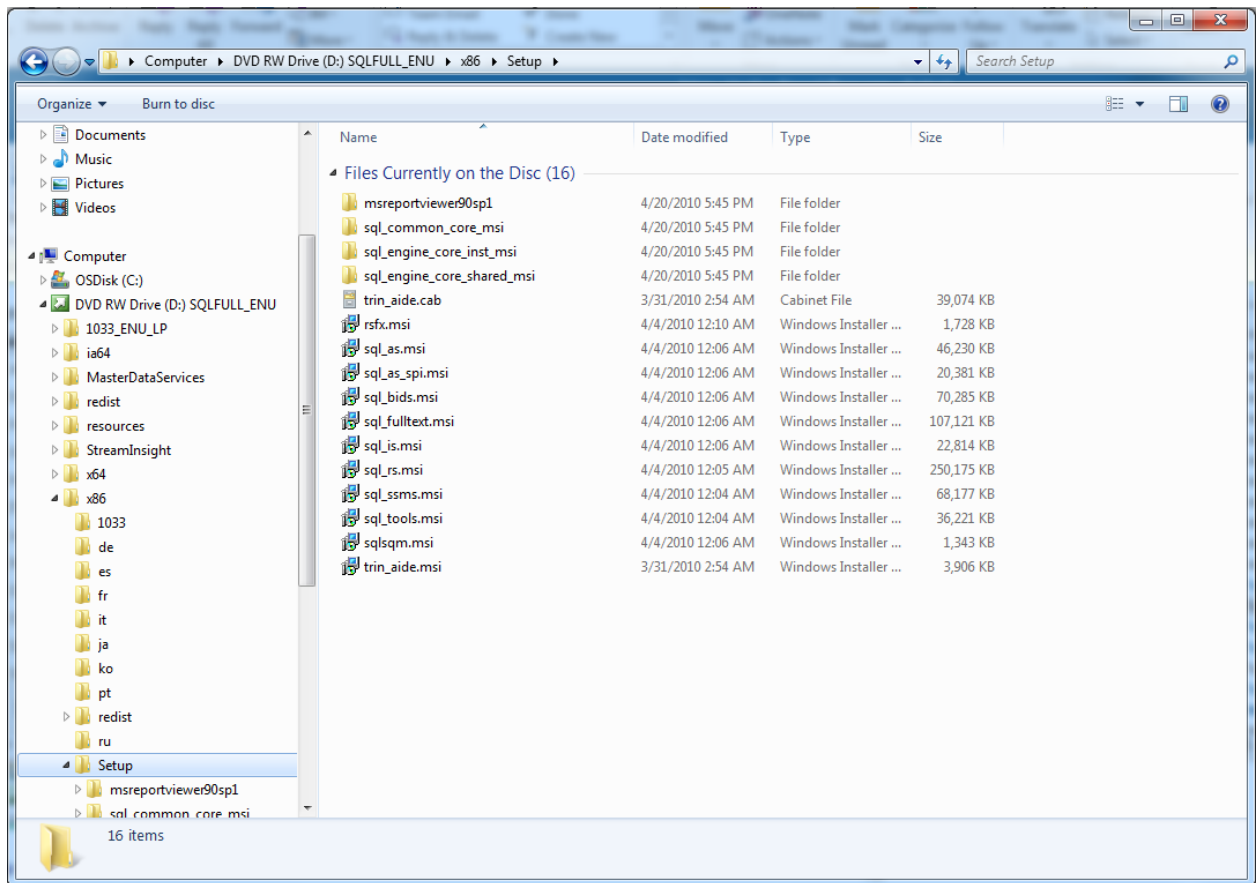
## Backwards Compatibility (SQLDMO) SQLServer2005\_BC.msi

Note: The SQL Compatibility installs can be found on the ISS45 8.1.8.1-050 Release CD in the \SQLComp\x32 or \SQLComp\x64 sub folders or the SQL Server 2008 Workgroup Edition CD \1033\_ENI\_LP \x86\setup\x86 for 32bit and \x64\setup\x64 for 64bit.

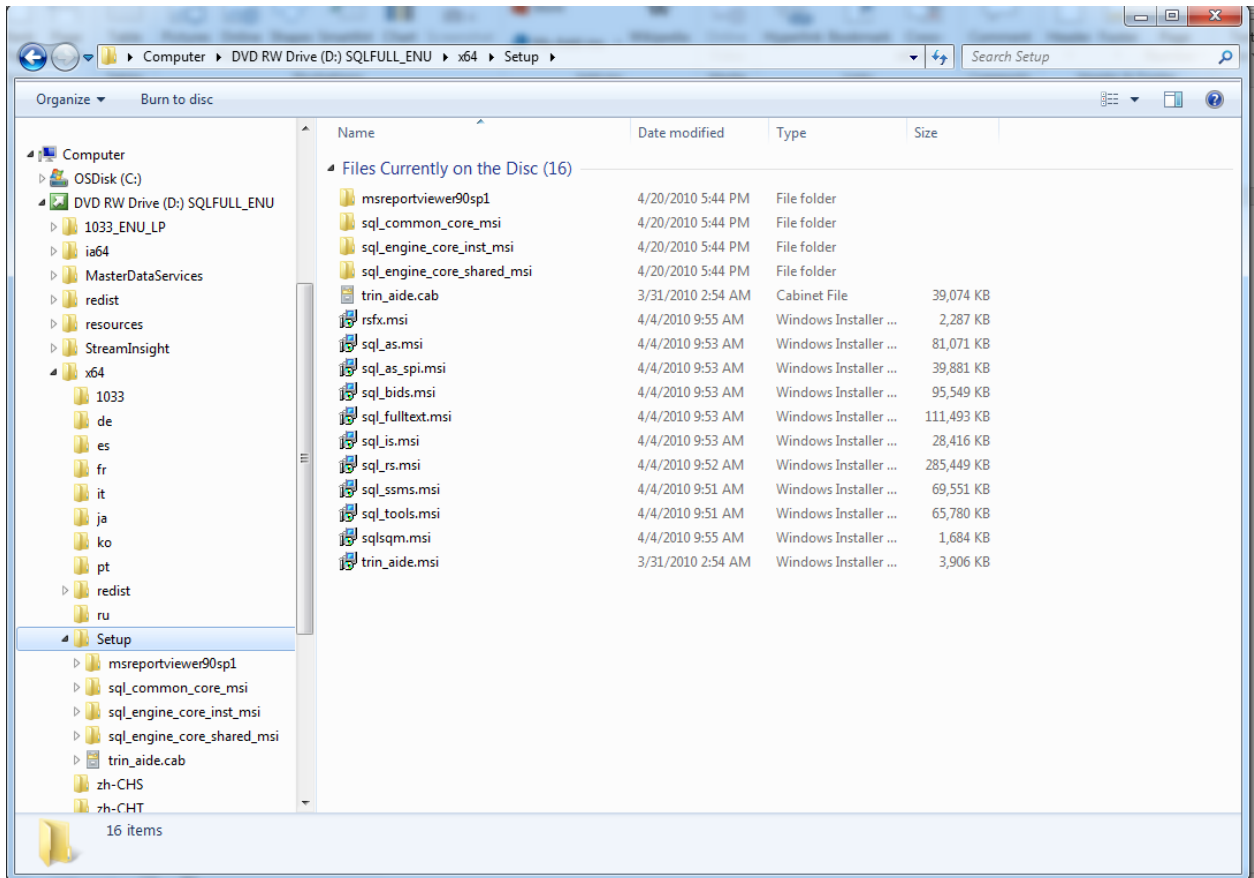
1. Run SQLServer2005\_BC.msi

Example from the Workgroups CD

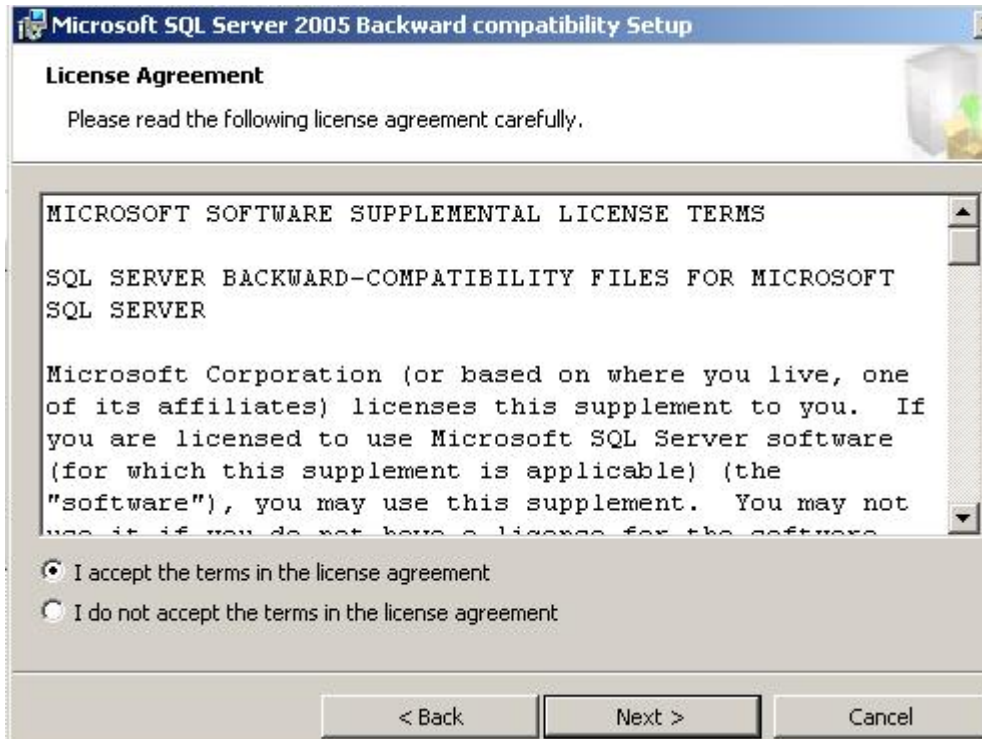
On 32-bit



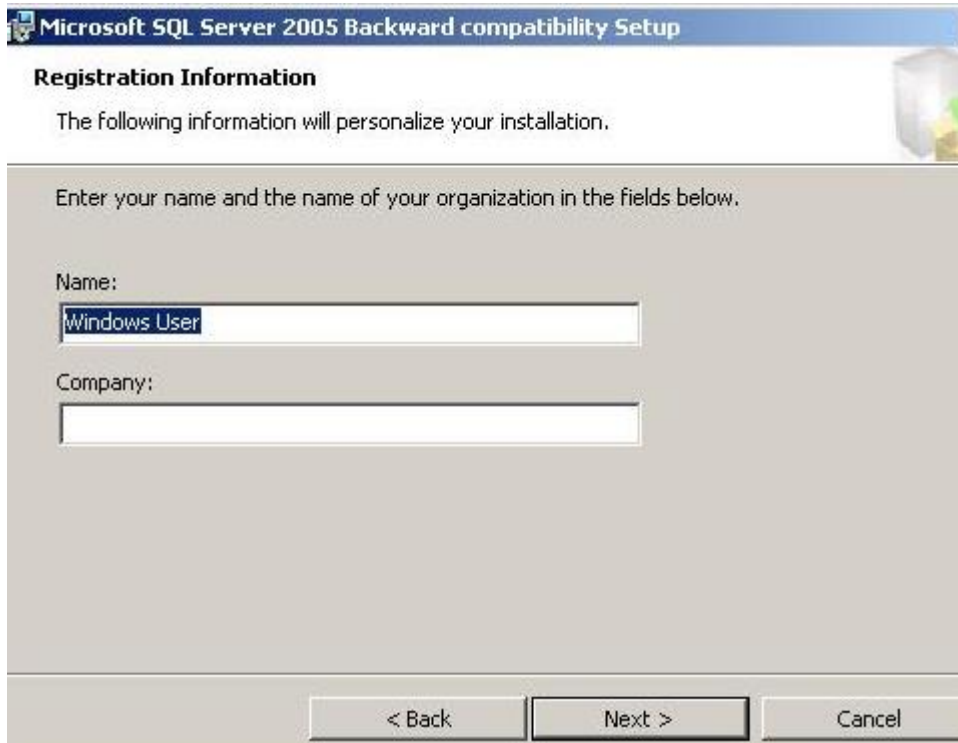
## On 64-bit



2. License Agreement – Select radio button “I accept the terms in the license agreement” and click Next.



3. Registration Information – Enter your information and then click Next.

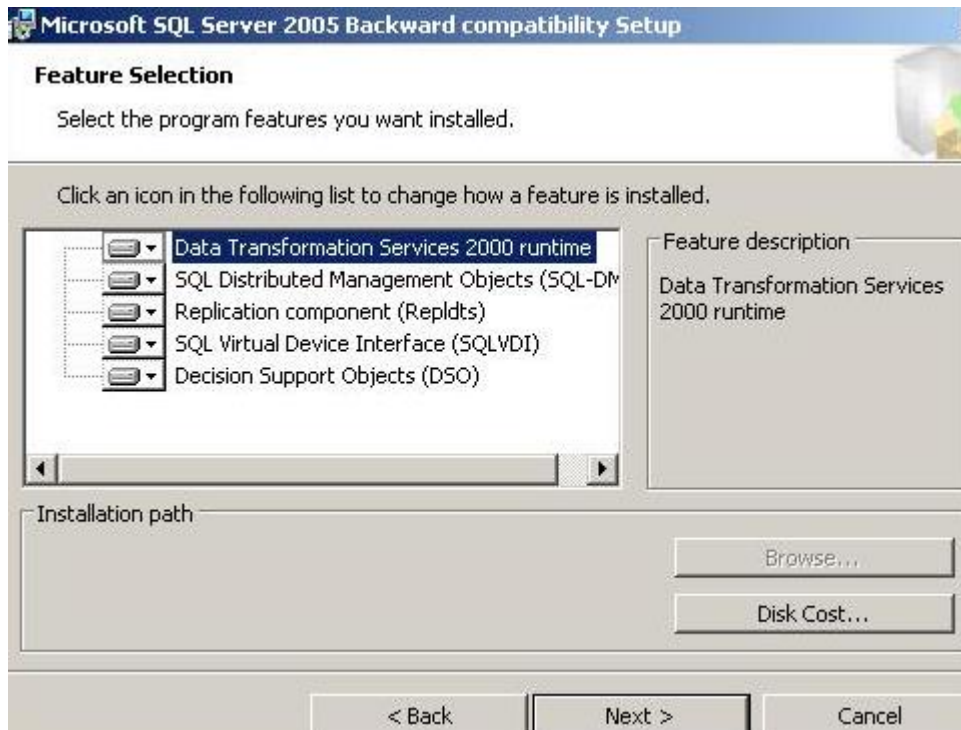


The screenshot shows a Windows-style dialog box titled "Microsoft SQL Server 2005 Backward compatibility Setup". The main heading is "Registration Information". Below the heading, it says "The following information will personalize your installation." and "Enter your name and the name of your organization in the fields below." There are two text input fields: the first is labeled "Name:" and contains the text "Windows User"; the second is labeled "Company:" and is currently empty. At the bottom of the dialog, there are three buttons: "< Back", "Next >", and "Cancel".

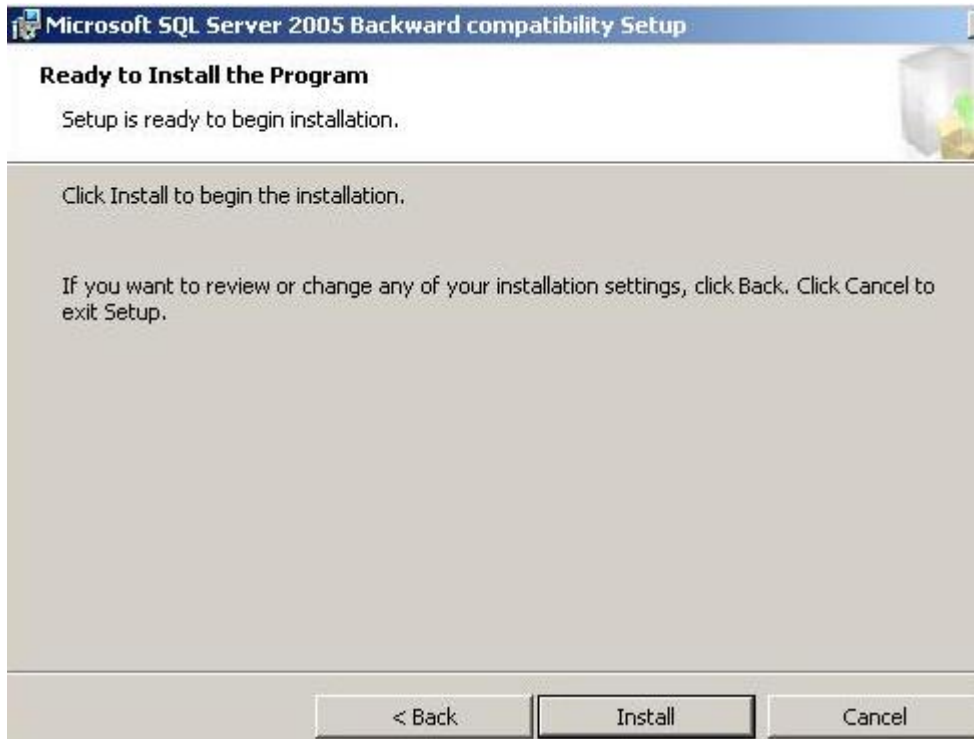
4. Microsoft SQL Server 2005 Backward compatibility Setup – is displayed. Click Next.



## 5. Feature Selection – Click Next.



6. Ready to install the Program – Click Install.



7. Completing the Microsoft SQL Server 2005 Backward compatibility Setup – Click Finish.

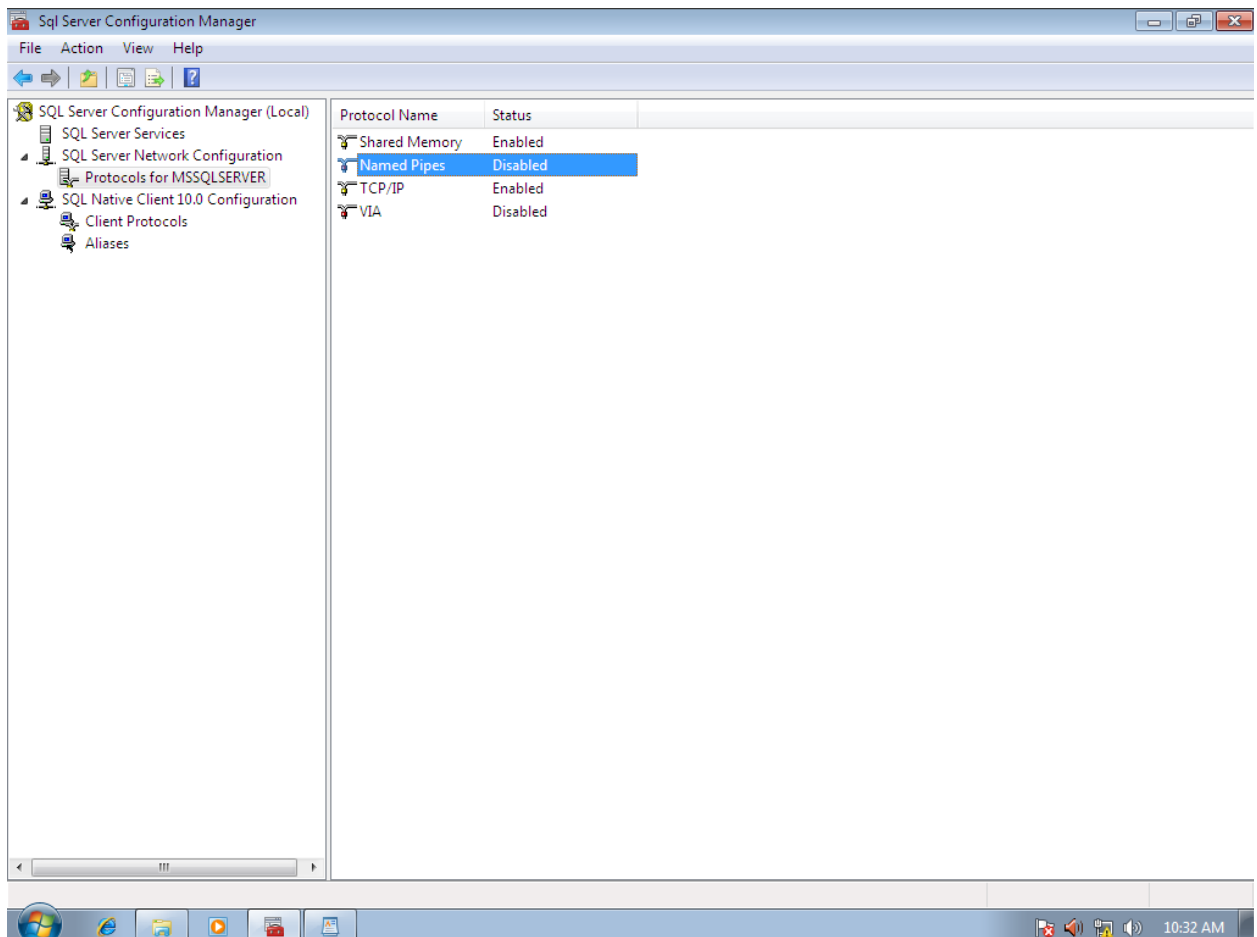


## Enable Named Pipes

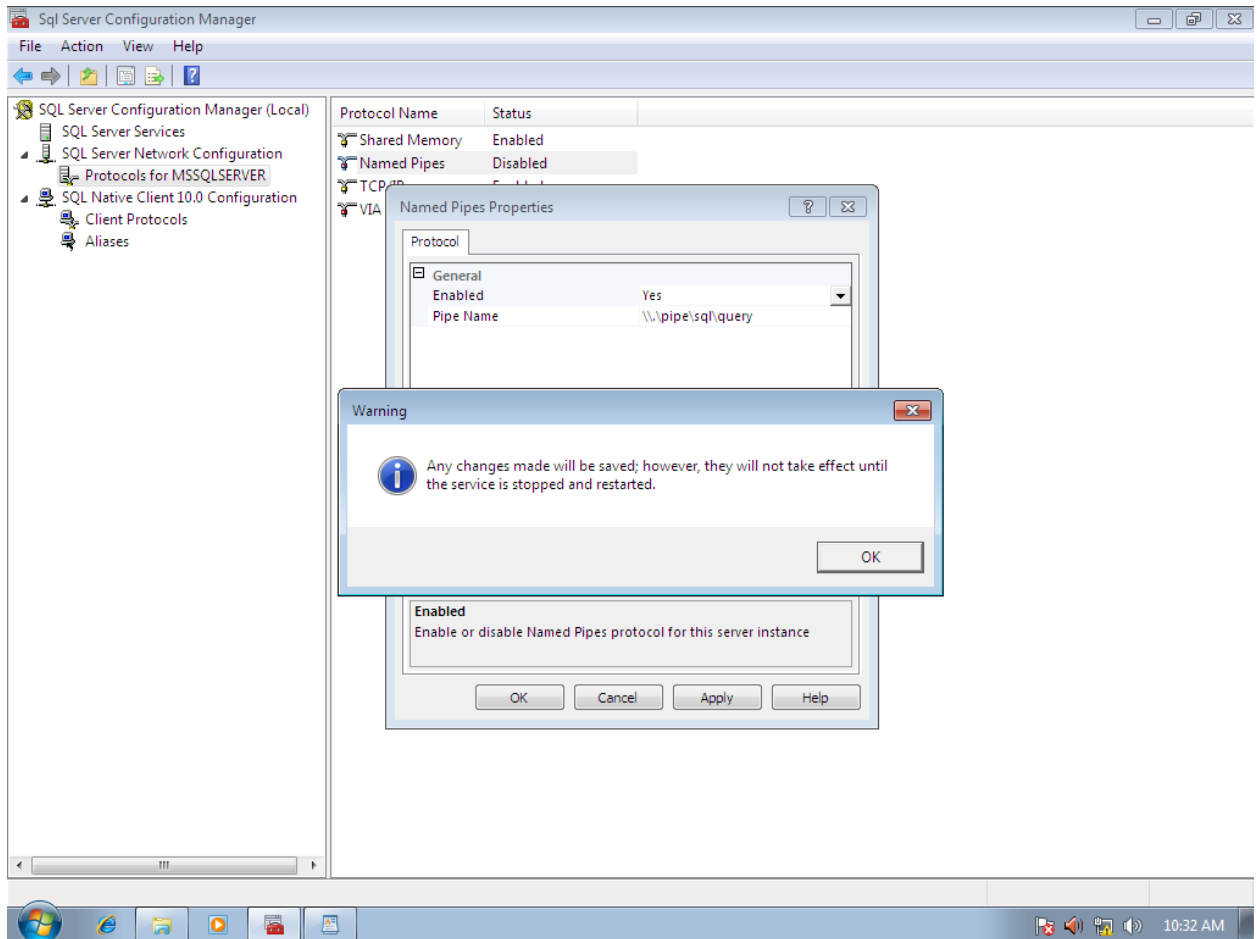
To allow for backwards compatibility with a Windows XP MFS2 or LFS Workstation, a change must be made once the installation of SQL 2008 has been completed. In previous versions of SQL and Windows, Retalix used Named Pipes as the communications protocol for connections to the Front Office database on MFS1.

However, Named Pipes are disabled by default in SQL 2008

1. Click START-> ALL PROGRAMS->MICROSOFT SQL Server 2008->Configuration Tools -> SQL Server Configuration Manager.
2. Open the SQL Server Network Configuration folder.
3. Click on Protocols for MSSQLSERVER



4. Double-click on Named Pipes and change the Enabled value from NO to YES. Click on Apply. Click OK to acknowledge the warning that changes will not take effect until the service is stopped and restarted.



5. Click OK, close all open windows and reboot MFS1.

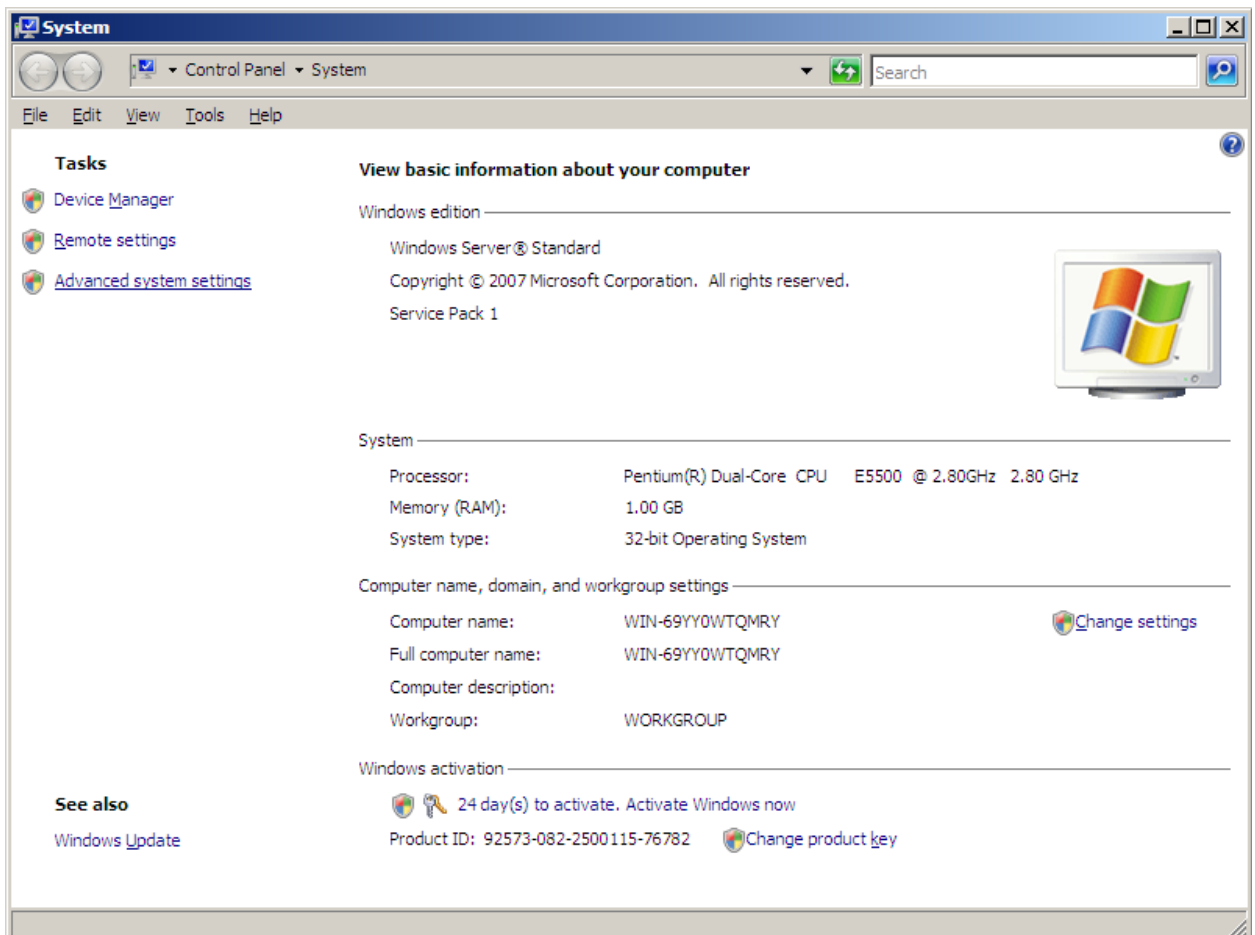
# Disable Data Execution Prevention (DEP)

It is recommended that DEP be completely disabled on all Retalix PC's.

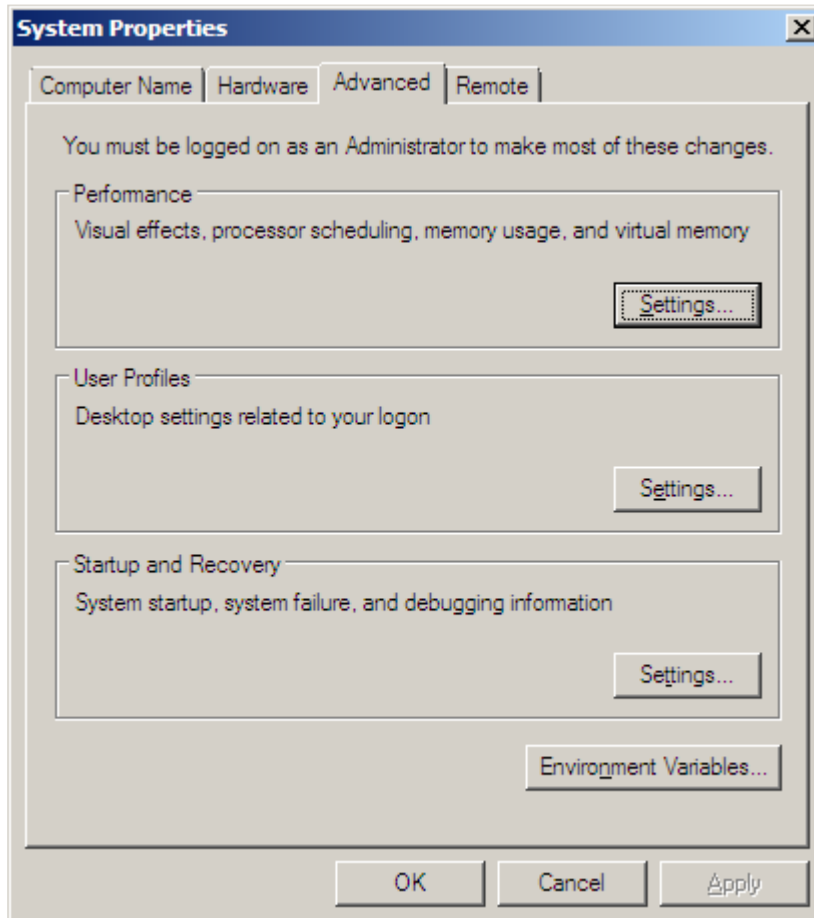
DEP can be turned on for all applications, turned on for only certain applications or can be completely turned off.

DEP settings can be changed through the GUI application but a command level script must be run to completely disable the application.

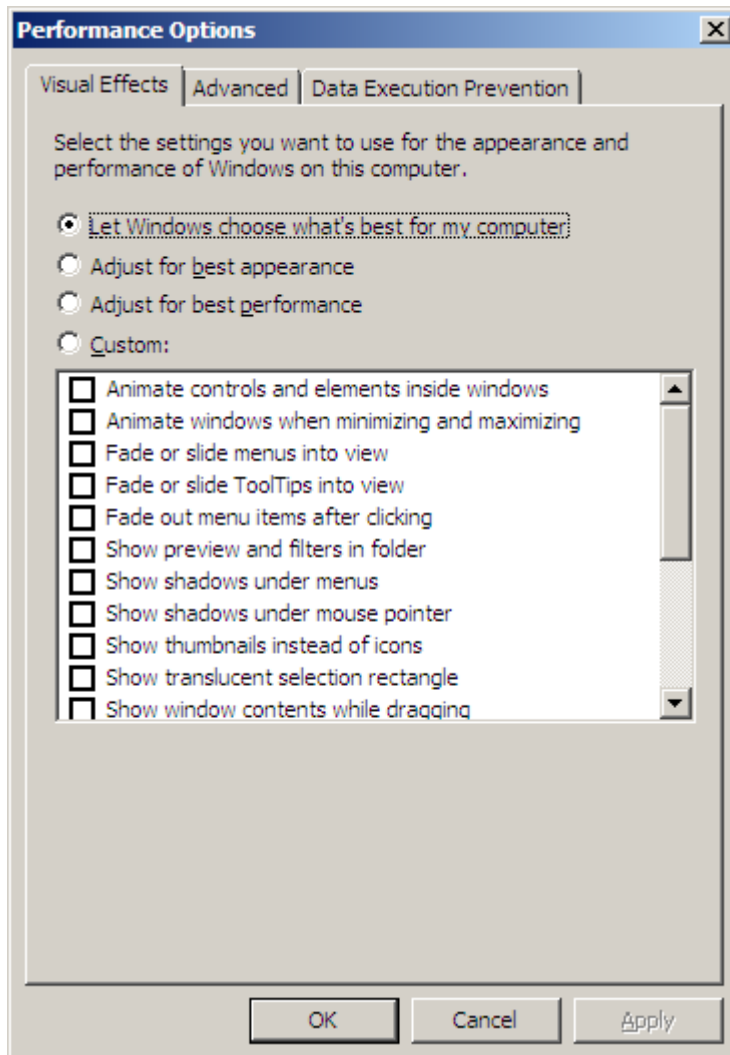
1. Check the current settings for DEP by opening the System application as shown below then click on Advanced system settings.



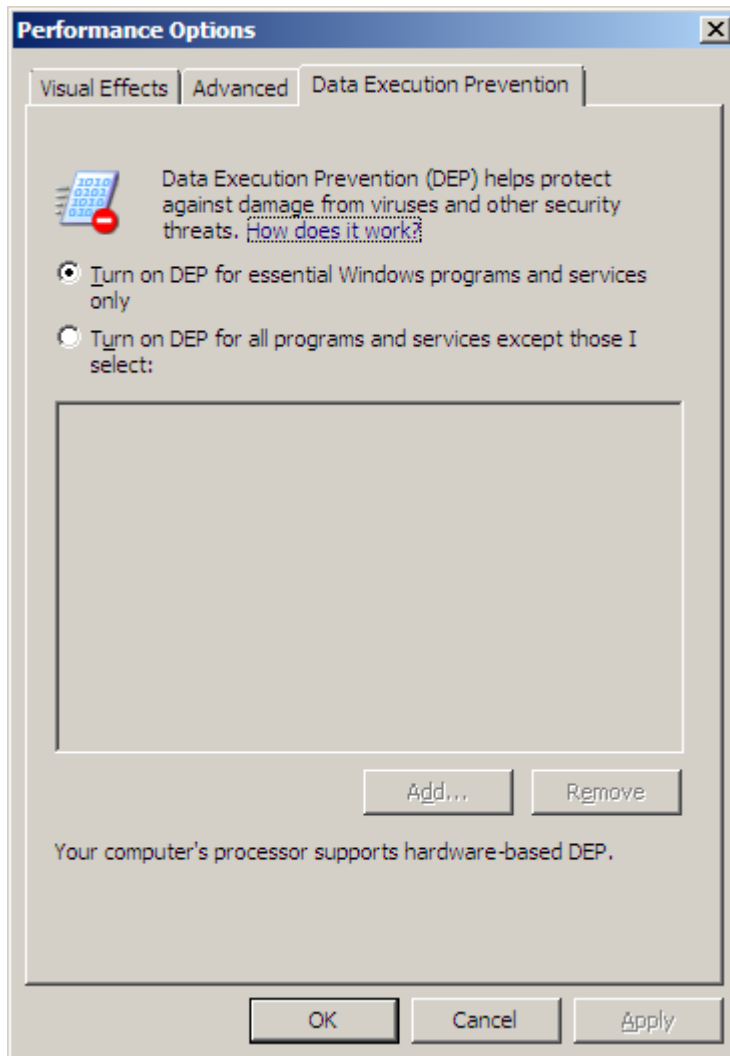
2. Click on the Advanced Tab followed by Settings in the Performance section.



3. Click on the Data Execution Prevention Tab.

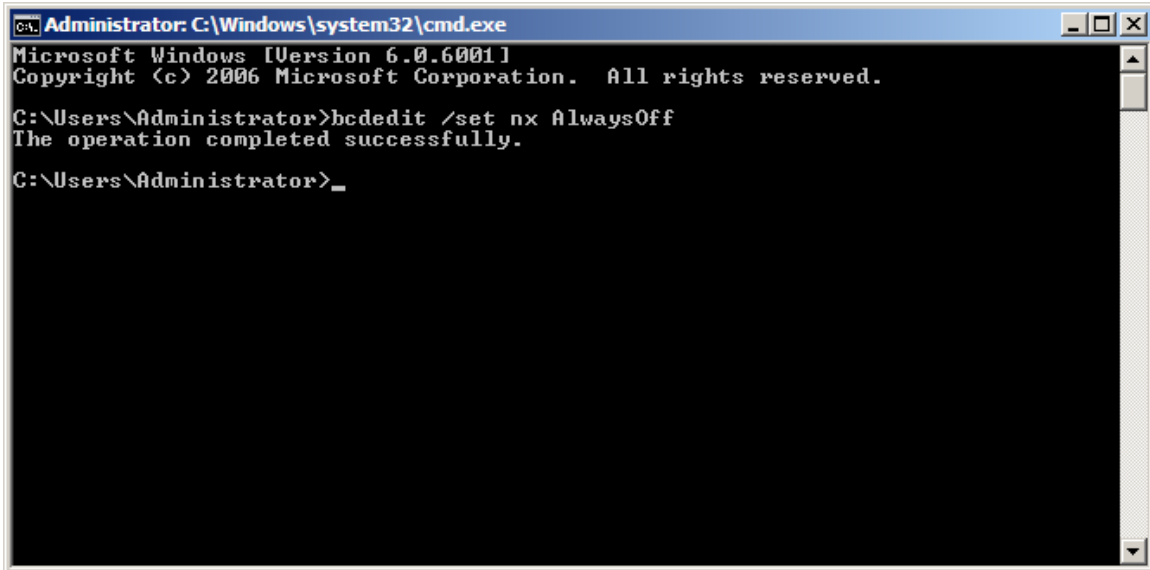


4. In this example DEP is turned on for essential programs and services only.



5. Open a Command Line window and enter `bcdedit /set nx AlwaysOff`.

6. Reboot the PC and then check the status of DEP.

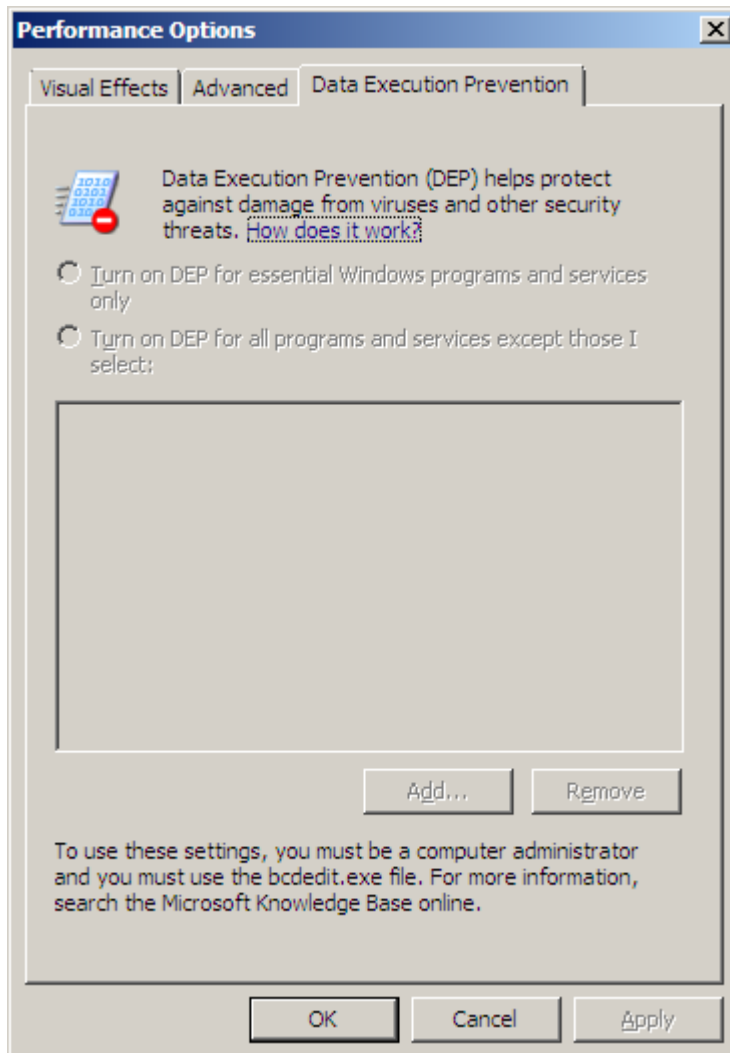


```
Administrator: C:\Windows\system32\cmd.exe
Microsoft Windows [Version 6.0.6001]
Copyright (c) 2006 Microsoft Corporation. All rights reserved.

C:\Users\Administrator>bcdedit /set nx AlwaysOff
The operation completed successfully.

C:\Users\Administrator>_
```

- Note both options are now grayed out above. This indicates that DEP is completely disabled for this machine.





© NCR Corporation, 2016

NCR endeavors to ensure that the information in this document is correct and fairly stated but does not accept liability for any error or omission.

The development of NCR products and services is continuous and published information may not be up to date. It is important to check the current position with NCR. This document is not part of a contract or license, save insofar as may be expressly agreed.

---

**NCR Corporation**  
2651 Satellite Blvd.  
Duluth, GA 30096

**P/N 89000880**  
**PIN 45001/032**